

## GATA-1 Polyclonal Antibody

Catalog No: #40953

Package Size: #40953-1 50ul #40953-2 100ul

Orders: order@signalwayantibody.com

Support: tech@signalwayantibody.com

## Description

|                       |  |
|-----------------------|--|
| Product Name          | GATA-1 Polyclonal Antibody   |
| Host Species          | Rabbit   |
| Clonality             | Polyclonal   |
| Purification          | The antibody was affinity-purified from rabbit antiserum by affinity-chromatography using epitope-specific immunogen.    |
| Applications          | WB ELISA   |
| Species Reactivity    | Hu Ms Rt Mk  |
| Specificity           | GATA-1 Polyclonal Antibody detects endogenous levels of GATA-1 protein.  |
| Immunogen Type        | peptide  |
| Immunogen Description | Synthesized peptide derived from human GATA-1 around the non-phosphorylation site of S310.                               |
| Target Name           | GATA-1   |
| Other Names           | GATA1; ERYF1; GF1; Erythroid transcription factor; Eryf1; GATA-binding factor 1; GATA-1; GF-1; NF-E1 DNA-binding protein |
| Accession No.         | Swiss-Prot: P15976NCBI Gene ID: 2623   |
| Uniprot               | P15976   |
| GeneID                | 2623;  |
| SDS-PAGE MW           | 43kd   |
| Concentration         | 1mg/ml   |
| Formulation           | Liquid in PBS containing 50% glycerol, 0.5% BSA and 0.02% sodium azide.  |
| Storage               | Store at -20°C/1 year  |

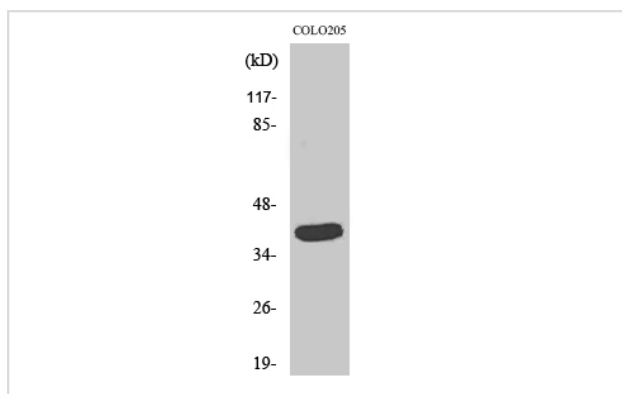
## Application Details

Western Blot: 1/500 - 1/2000.

ELISA: 1/20000.

Not yet tested in other applications.

## Images



Western Blot analysis of COLO205 cells using GATA-1 Polyclonal Antibody

---

Note: This product is for in vitro research use only