

GCK Polyclonal Antibody

Catalog No: #40955

Package Size: #40955-1 50ul #40955-2 100ul

Orders: order@signalwayantibody.comSupport: tech@signalwayantibody.com

Description

Product Name	GCK Polyclonal Antibody
Host Species	Rabbit
Clonality	Polyclonal
Purification	The antibody was affinity-purified from rabbit antiserum by affinity-chromatography using epitope-specific immunogen.
Applications	WB ELISA
Species Reactivity	Hu Ms Rt
Specificity	GCK Polyclonal Antibody detects endogenous levels of GCK protein.
Immunogen Type	peptide
Immunogen Description	Synthesized peptide derived from the N-terminal region of human GCK.
Target Name	GCK
Other Names	GCK; Glucokinase; Hexokinase type IV; HK IV; Hexokinase-4; HK4; Hexokinase-D
Accession No.	Swiss-Prot: P35557NCBI Gene ID: 2645
Uniprot	P35557
GeneID	2645;
SDS-PAGE MW	55kd
Concentration	1mg/ml
Formulation	Liquid in PBS containing 50% glycerol, 0.5% BSA and 0.02% sodium azide.
Storage	Store at -20°C/1 year

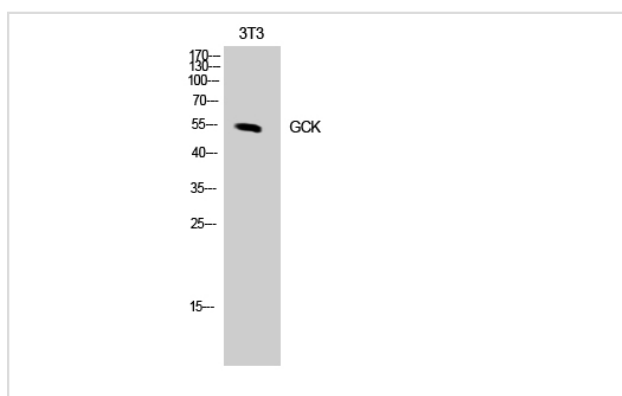
Application Details

Western Blot: 1/500 - 1/2000.

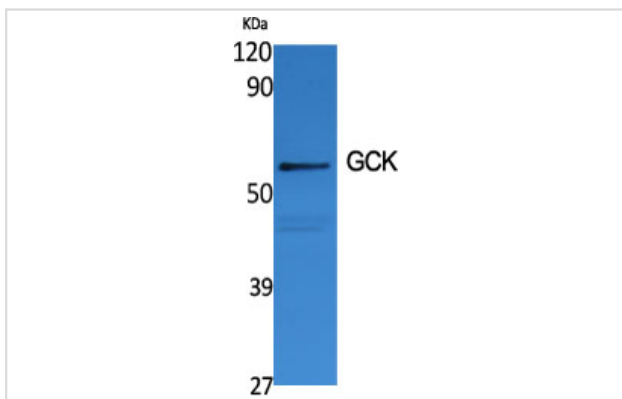
ELISA: 1/10000.

Not yet tested in other applications.

Images



Western Blot analysis of NIH-3T3 cells using GCK Polyclonal Antibody



Western Blot analysis of various cells using GCK Polyclonal Antibody

Note: This product is for in vitro research use only