

## GCN5 Polyclonal Antibody

Catalog No: #40956

Package Size: #40956-1 50ul #40956-2 100ul

Orders: [order@signalwayantibody.com](mailto:order@signalwayantibody.com)Support: [tech@signalwayantibody.com](mailto:tech@signalwayantibody.com)

## Description

Product Name	GCN5 Polyclonal Antibody
Host Species	Rabbit
Clonality	Polyclonal
Purification	The antibody was affinity-purified from rabbit antiserum by affinity-chromatography using epitope-specific immunogen.
Applications	WB IHC ELISA
Species Reactivity	Hu Ms
Specificity	GCN5 Polyclonal Antibody detects endogenous levels of GCN5 protein.
Immunogen Type	peptide
Immunogen Description	Synthesized peptide derived from the C-terminal region of human GCN5.
Target Name	GCN5
Other Names	KAT2A; GCN5; GCN5L2; HGCN5; Histone acetyltransferase KAT2A; General control of amino acid synthesis protein 5-like 2; Histone acetyltransferase GCN5; HsGCN5; Lysine acetyltransferase 2A; STAF97
Accession No.	Swiss-Prot: Q92830NCBI Gene ID: 2648
Uniprot	Q92830
GeneID	2648;
SDS-PAGE MW	100kd
Concentration	1mg/ml
Formulation	Liquid in PBS containing 50% glycerol, 0.5% BSA and 0.02% sodium azide.
Storage	Store at -20°C/1 year

## Application Details

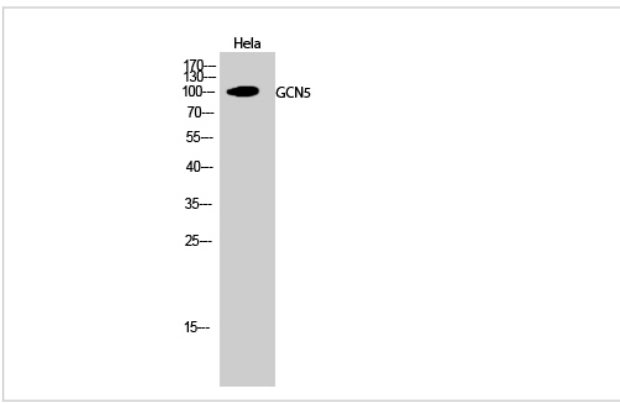
Western Blot: 1/500 - 1/2000.

Immunohistochemistry: 1/100 - 1/300.

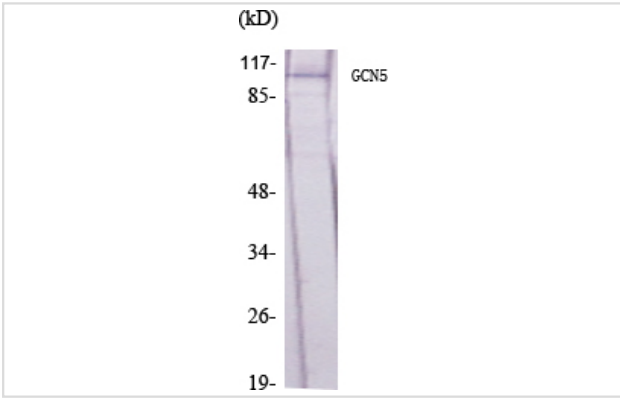
ELISA: 1/20000.

Not yet tested in other applications.

## Images



Western Blot analysis of HeLa cells using GCN5 Polyclonal Antibody



Western Blot analysis of various cells using GCN5 Polyclonal Antibody

---

Note: This product is for in vitro research use only