

## GIT2 Polyclonal Antibody

Catalog No: #40963

Package Size: #40963-1 50ul #40963-2 100ul

Orders: [order@signalwayantibody.com](mailto:order@signalwayantibody.com)Support: [tech@signalwayantibody.com](mailto:tech@signalwayantibody.com)

## Description

Product Name	GIT2 Polyclonal Antibody
Host Species	Rabbit
Clonality	Polyclonal
Purification	The antibody was affinity-purified from rabbit antiserum by affinity-chromatography using epitope-specific immunogen.
Applications	WB ELISA
Species Reactivity	Hu Ms Rt
Specificity	GIT2 Polyclonal Antibody detects endogenous levels of GIT2 protein.
Immunogen Type	peptide
Immunogen Description	Synthesized peptide derived from the Internal region of human GIT2.
Target Name	GIT2
Other Names	GIT2; KIAA0148; ARF GTPase-activating protein GIT2; ARF GAP GIT2; Cool-interacting tyrosine-phosphorylated protein 2; CAT-2; CAT2; G protein-coupled receptor kinase-interactor 2; GRK-interacting protein 2
Accession No.	Swiss-Prot: Q14161NCBI Gene ID: 9815
Uniprot	Q14161
GeneID	9815;
SDS-PAGE MW	84kd
Concentration	1mg/ml
Formulation	Liquid in PBS containing 50% glycerol, 0.5% BSA and 0.02% sodium azide.
Storage	Store at -20°C/1 year

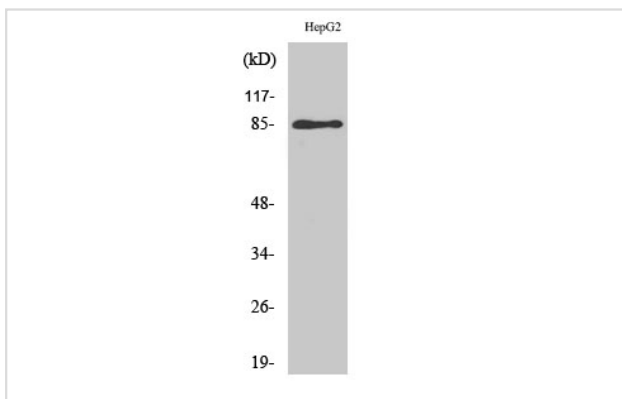
## Application Details

Western Blot: 1/500 - 1/2000.

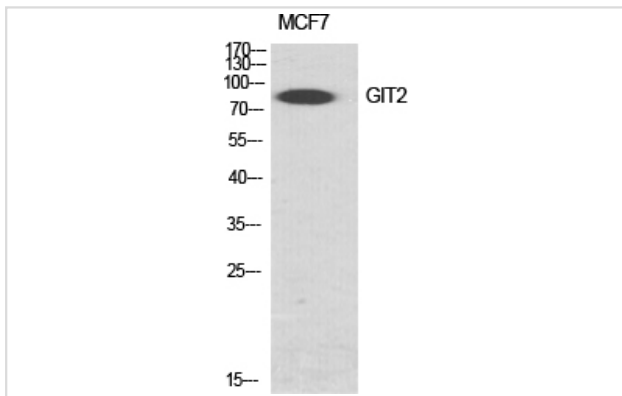
ELISA: 1/10000.

Not yet tested in other applications.

## Images



Western Blot analysis of HepG2 cells using GIT2 Polyclonal Antibody



Western Blot analysis of MCF7 cells using GIT2 Polyclonal Antibody

---

Note: This product is for in vitro research use only