

## GluR-1 Polyclonal Antibody

Catalog No: #40966

Package Size: #40966-1 50ul #40966-2 100ul

Orders: [order@signalwayantibody.com](mailto:order@signalwayantibody.com)Support: [tech@signalwayantibody.com](mailto:tech@signalwayantibody.com)

## Description

Product Name	GluR-1 Polyclonal Antibody
Host Species	Rabbit
Clonality	Polyclonal
Purification	The antibody was affinity-purified from rabbit antiserum by affinity-chromatography using epitope-specific immunogen.
Applications	WB IHC IF ELISA
Species Reactivity	Hu Ms Rt Mk
Specificity	GluR-1 Polyclonal Antibody detects endogenous levels of GluR-1 protein.
Immunogen Type	peptide
Immunogen Description	Synthesized peptide derived from human GluR-1 around the non-phosphorylation site of S863.
Target Name	GluR-1
Other Names	GRIA1; GLUH1; GLUR1; Glutamate receptor 1; GluR-1; AMPA-selective glutamate receptor 1; GluR-A; GluR-K1; Glutamate receptor ionotropic; AMPA 1; GluA1
Accession No.	Swiss-Prot: P42261NCBI Gene ID: 2890
Uniprot	P42261
GeneID	2890;
SDS-PAGE MW	102kd
Concentration	1mg/ml
Formulation	Liquid in PBS containing 50% glycerol, 0.5% BSA and 0.02% sodium azide.
Storage	Store at -20°C/1 year

## Application Details

Western Blot: 1/500 - 1/2000.

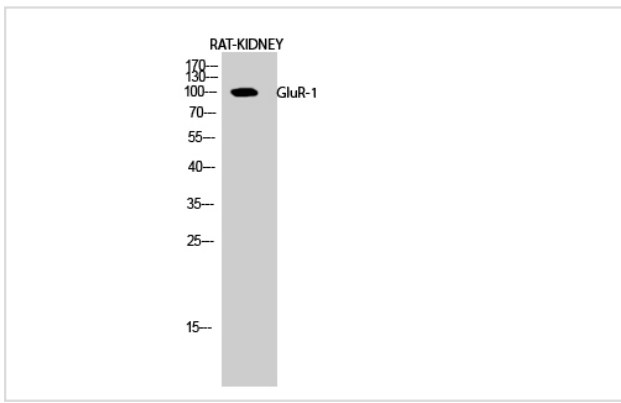
Immunohistochemistry: 1/100 - 1/300.

Immunofluorescence: 1/200 - 1/1000.

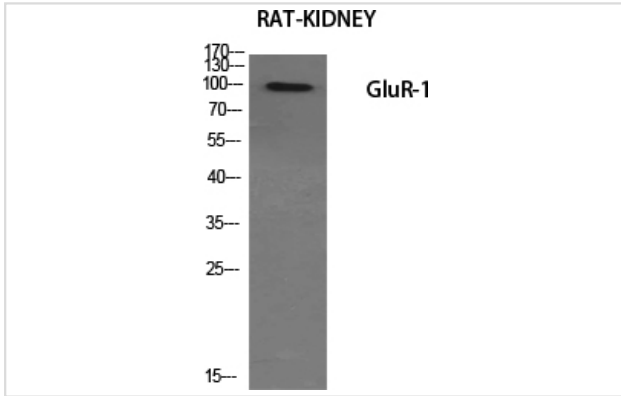
ELISA: 1/40000.

Not yet tested in other applications.

## Images



Western Blot analysis of RAT-KIDNEY cells using GluR-1 Polyclonal Antibody



Western Blot analysis of RAT-KIDNEY cells using GluR-1 Polyclonal Antibody

---

Note: This product is for in vitro research use only