

GPR56 Polyclonal Antibody

Catalog No: #40984

Package Size: #40984-1 50ul #40984-2 100ul

Orders: order@signalwayantibody.comSupport: tech@signalwayantibody.com

Description

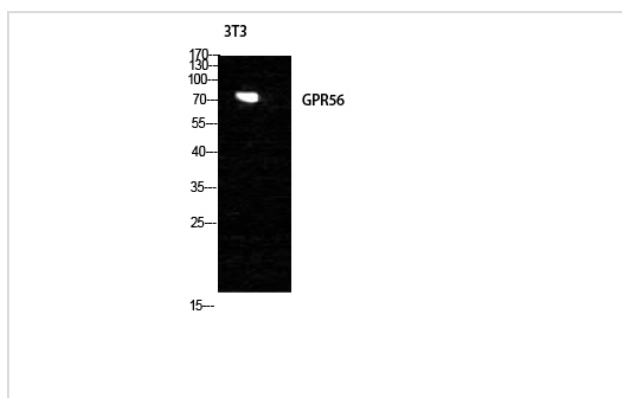
Product Name	GPR56 Polyclonal Antibody
Host Species	Rabbit
Clonality	Polyclonal
Purification	The antibody was affinity-purified from rabbit antiserum by affinity-chromatography using epitope-specific immunogen.
Applications	WB IF
Species Reactivity	Hu Ms Rt
Specificity	GPR56 Polyclonal Antibody detects endogenous levels of GPR56 protein.
Immunogen Description	Synthesized peptide derived from the Internal region of human GPR56.
Target Name	GPR56
Other Names	GPR56; TM7LN4; TM7XN1; G-protein coupled receptor 56; Protein TM7XN1
Accession No.	Swiss-Prot: Q9Y653NCBI Gene ID: 9289
Uniprot	Q9Y653
GeneID	9289;
SDS-PAGE MW	78kd
Concentration	1mg/ml
Formulation	Liquid in PBS containing 50% glycerol, 0.5% BSA and 0.02% sodium azide.
Storage	Store at -20°C/1 year

Application Details

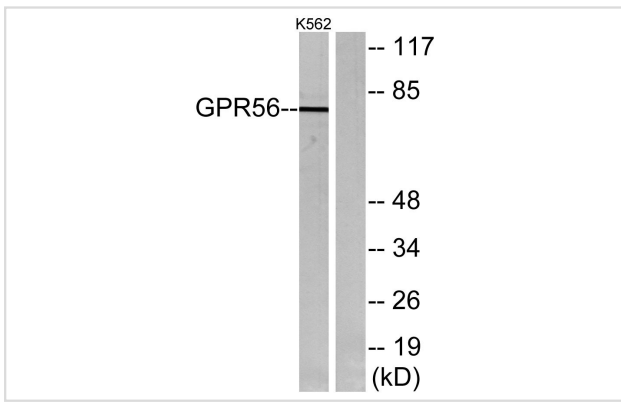
Western Blot: 1/500 - 1/2000.

Immunofluorescence: 1/200 - 1/1000.

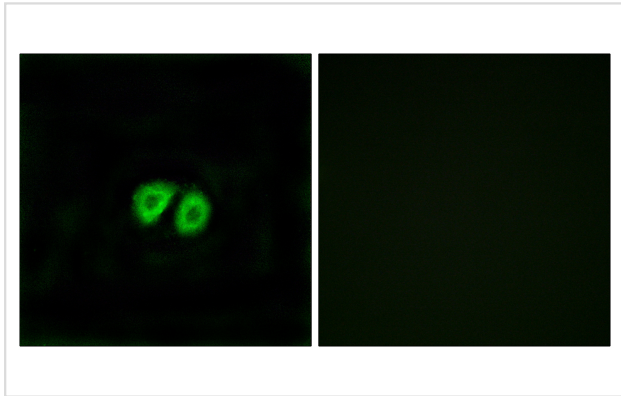
Images



Western Blot analysis of NIH-3T3 cells using GPR56 Polyclonal Antibody



Western blot analysis of lysates from K562 cells, using GPR56 Antibody. The lane on the right is blocked with the synthesized peptide.



Immunofluorescence analysis of MCF7 cells, using GPR56 Antibody. The picture on the right is blocked with the synthesized peptide.

Note: This product is for in vitro research use only