

GRK 2 Polyclonal Antibody

Catalog No: #40987

Package Size: #40987-1 50ul #40987-2 100ul

Orders: order@signalwayantibody.comSupport: tech@signalwayantibody.com

Description

Product Name	GRK 2 Polyclonal Antibody
Host Species	Rabbit
Clonality	Polyclonal
Purification	The antibody was affinity-purified from rabbit antiserum by affinity-chromatography using epitope-specific immunogen.
Applications	WB IHC ELISA
Species Reactivity	Hu Ms Rt
Specificity	GRK 2 Polyclonal Antibody detects endogenous levels of GRK 2 protein.
Immunogen Type	peptide
Immunogen Description	Synthesized peptide derived from human GRK 2 around the non-phosphorylation site of S685.
Target Name	GRK 2
Other Names	ADRBK1; BARK; BARK1; GRK2; Beta-adrenergic receptor kinase 1; Beta-ARK-1; G-protein coupled receptor kinase 2
Accession No.	Swiss-Prot: P25098NCBI Gene ID: 156
Uniprot	P25098
GeneID	156;
SDS-PAGE MW	80kd
Concentration	1mg/ml
Formulation	Liquid in PBS containing 50% glycerol, 0.5% BSA and 0.02% sodium azide.
Storage	Store at -20°C/1 year

Application Details

Western Blot: 1/500 - 1/2000.

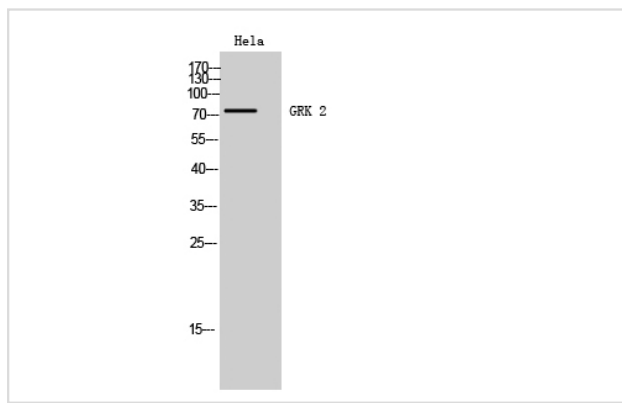
Immunohistochemistry: 1/100 - 1/300.

ELISA: 1/5000.

Not yet tested in other applications.

Images

Western Blot analysis of HeLa cells using GRK 2 Polyclonal Antibody



Note: This product is for in vitro research use only