

GSK3 α / β Polyclonal Antibody

Catalog No: #40988

Package Size: #40988-1 50ul #40988-2 100ul

Orders: order@signalwayantibody.comSupport: tech@signalwayantibody.com

Description

Product Name	GSK3 α / β Polyclonal Antibody
Host Species	Rabbit
Clonality	Polyclonal
Purification	The antibody was affinity-purified from rabbit antiserum by affinity-chromatography using epitope-specific immunogen.
Applications	WB IHC ELISA
Species Reactivity	Hu Ms Rt
Specificity	GSK3 α / β Polyclonal Antibody detects endogenous levels of GSK3 α / β protein.
Immunogen Type	peptide
Immunogen Description	Synthesized peptide derived from human GSK3 α / β around the non-phosphorylation site of Y279/216.
Target Name	GSK3 α / β
Other Names	GSK3A; Glycogen synthase kinase-3 alpha; GSK-3 alpha; Serine/threonine-protein kinase GSK3A; GSK3B; Glycogen synthase kinase-3 beta; GSK-3 beta; Serine/threonine-protein kinase GSK3B
Accession No.	Swiss-Prot: P49840/P49841NCBI Gene ID: 2931
Uniprot	P49840
GeneID	2931;
SDS-PAGE MW	51kd
Concentration	1mg/ml
Formulation	Liquid in PBS containing 50% glycerol, 0.5% BSA and 0.02% sodium azide.
Storage	Store at -20°C/1 year

Application Details

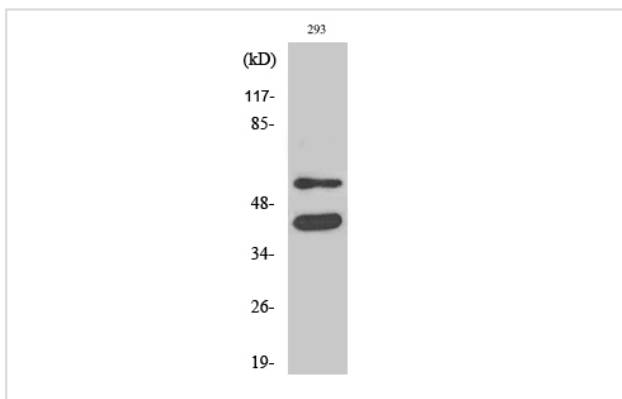
Western Blot: 1/500 - 1/2000.

Immunohistochemistry: 1/100 - 1/300.

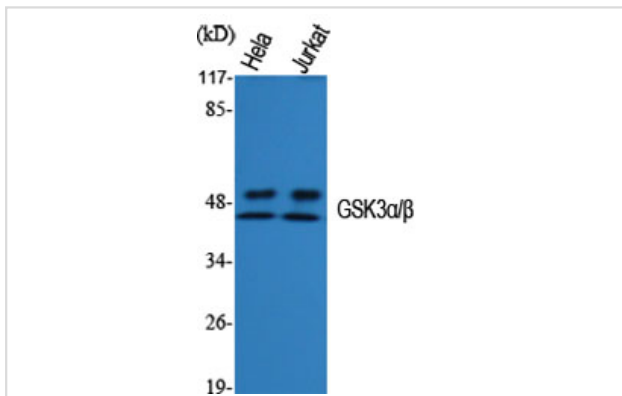
ELISA: 1/20000.

Not yet tested in other applications.

Images



Western Blot analysis of 293 cells using GSK3 α / β Polyclonal Antibody



Western Blot analysis of HELA Jurkat cells using GSK3 α / β Polyclonal Antibody

Note: This product is for in vitro research use only