

## HES-6 Polyclonal Antibody

Catalog No: #41003

Package Size: #41003-1 50ul #41003-2 100ul

Orders: [order@signalwayantibody.com](mailto:order@signalwayantibody.com)Support: [tech@signalwayantibody.com](mailto:tech@signalwayantibody.com)

## Description

Product Name	HES-6 Polyclonal Antibody
Host Species	Rabbit
Clonality	Polyclonal
Purification	The antibody was affinity-purified from rabbit antiserum by affinity-chromatography using epitope-specific immunogen.
Applications	WB IHC ELISA
Species Reactivity	Hu
Specificity	HES-6 Polyclonal Antibody detects endogenous levels of HES-6 protein.
Immunogen Type	peptide
Immunogen Description	Synthesized peptide derived from the N-terminal region of human HES-6.
Target Name	HES-6
Other Names	HES6; BHLHB41; Transcription cofactor HES-6; C-HAIRY1; Class B basic helix-loop-helix protein 41; bHLHb41; Hairy and enhancer of split 6
Accession No.	Swiss-Prot: Q96HZ4NCBI Gene ID: 55502
Uniprot	Q96HZ4
GeneID	55502;
SDS-PAGE MW	30kd
Concentration	1mg/ml
Formulation	Liquid in PBS containing 50% glycerol, 0.5% BSA and 0.02% sodium azide.
Storage	Store at -20°C/1 year

## Application Details

Western Blot: 1/500 - 1/2000.

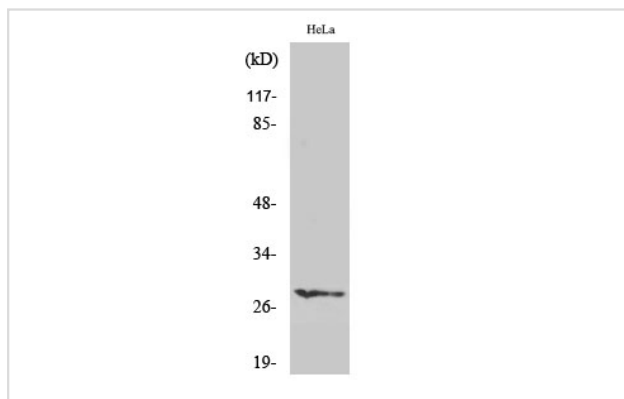
Immunohistochemistry: 1/100 - 1/300.

ELISA: 1/10000.

Not yet tested in other applications.

## Images

Western Blot analysis of HeLa cells using HES-6 Polyclonal Antibody



---

Note: This product is for in vitro research use only