

## Histone 1.0 Polyclonal Antibody

Catalog No: #41008

Package Size: #41008-1 50ul #41008-2 100ul

Orders: order@signalwayantibody.com

Support: tech@signalwayantibody.com

## Description

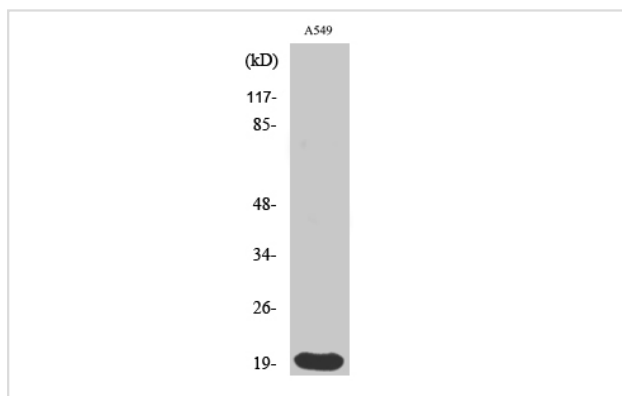
Product Name	Histone 1.0 Polyclonal Antibody
Host Species	Rabbit
Clonality	Polyclonal
Purification	The antibody was affinity-purified from rabbit antiserum by affinity-chromatography using epitope-specific immunogen.
Applications	WB IHC
Species Reactivity	Hu
Specificity	Histone 1.0 Polyclonal Antibody detects endogenous levels of Histone 1.0 protein.
Immunogen Type	peptide
Immunogen Description	Synthesized peptide derived from the Internal region of human Histone 1.0.
Target Name	Histone 1.0
Other Names	H1F0; H1FV; Histone H1.0; Histone H1 <sup>+</sup> ; Histone H1(0)
Accession No.	Swiss-Prot: P07305NCBI Gene ID: 3005
Uniprot	P07305
GeneID	3005;
SDS-PAGE MW	20kd
Concentration	1mg/ml
Formulation	Liquid in PBS containing 50% glycerol, 0.5% BSA and 0.02% sodium azide.
Storage	Store at -20°C/1 year

## Application Details

Western Blot: 1/500 - 1/2000.

Immunohistochemistry: 1/100 - 1/300.

## Images



Western Blot analysis of A549 cells using Histone 1.0 Polyclonal Antibody

---

Note: This product is for in vitro research use only