

# Histone deacetylase 1 Polyclonal Antibody

Catalog No: #41009

Package Size: #41009-1 50ul #41009-2 100ul

Orders: [order@signalwayantibody.com](mailto:order@signalwayantibody.com)Support: [tech@signalwayantibody.com](mailto:tech@signalwayantibody.com)

## Description

Product Name	Histone deacetylase 1 Polyclonal Antibody
Host Species	Rabbit
Clonality	Polyclonal
Purification	The antibody was affinity-purified from rabbit antiserum by affinity-chromatography using epitope-specific immunogen.
Applications	WB IHC IF ELISA
Species Reactivity	Hu Ms Rt
Specificity	Histone deacetylase 1 Polyclonal Antibody detects endogenous levels of Histone deacetylase 1 protein.
Immunogen Type	peptide
Immunogen Description	Synthesized peptide derived from the C-terminal region of human Histone deacetylase 1.
Target Name	Histone deacetylase 1
Other Names	HDAC1; RPD3L1; Histone deacetylase 1; HD1
Accession No.	Swiss-Prot: Q13547NCBI Gene ID: 3065
Uniprot	Q13547
GeneID	3065;
SDS-PAGE MW	55kd
Concentration	1mg/ml
Formulation	Liquid in PBS containing 50% glycerol, 0.5% BSA and 0.02% sodium azide.
Storage	Store at -20°C/1 year

## Application Details

Western Blot: 1/500 - 1/2000.

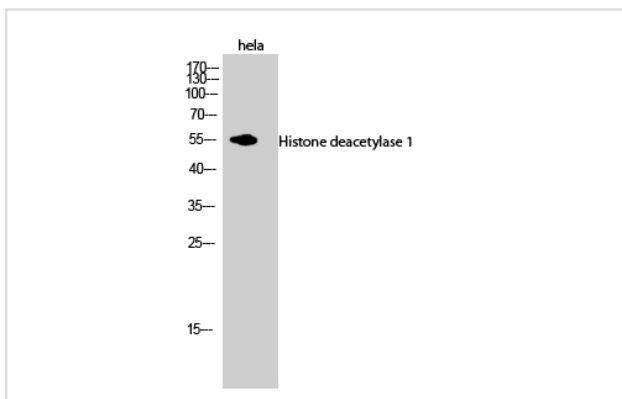
Immunohistochemistry: 1/100 - 1/300.

Immunofluorescence: 1/200 - 1/1000.

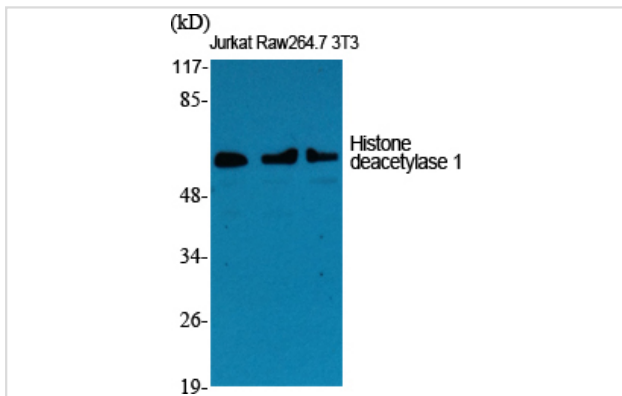
ELISA: 1/10000.

Not yet tested in other applications.

## Images



Western Blot analysis of hela cells using Histone deacetylase 1 Polyclonal Antibody



Western Blot analysis of Jurkat RAW NIH-3T3 cells using Histone deacetylase 1 Polyclonal Antibody

Note: This product is for in vitro research use only