

Histone deacetylase 10 Polyclonal Antibody

Catalog No: #41010

Package Size: #41010-1 50ul #41010-2 100ul

Orders: order@signalwayantibody.com

Support: tech@signalwayantibody.com

Description

Product Name	Histone deacetylase 10 Polyclonal Antibody
Host Species	Rabbit
Clonality	Polyclonal
Purification	The antibody was affinity-purified from rabbit antiserum by affinity-chromatography using epitope-specific immunogen.
Applications	WB IHC ELISA
Species Reactivity	Hu Ms Rt Mk
Specificity	Histone deacetylase 10 Polyclonal Antibody detects endogenous levels of Histone deacetylase 10 protein.
Immunogen Type	peptide
Immunogen Description	Synthesized peptide derived from the N-terminal region of human Histone deacetylase 10.
Target Name	Histone deacetylase 10
Other Names	HDAC10; Histone deacetylase 10; HD10
Accession No.	Swiss-Prot: Q969S8NCBI Gene ID: 83933
Uniprot	Q969S8
GeneID	83933;
SDS-PAGE MW	75kd
Concentration	1mg/ml
Formulation	Liquid in PBS containing 50% glycerol, 0.5% BSA and 0.02% sodium azide.
Storage	Store at -20°C/1 year

Application Details

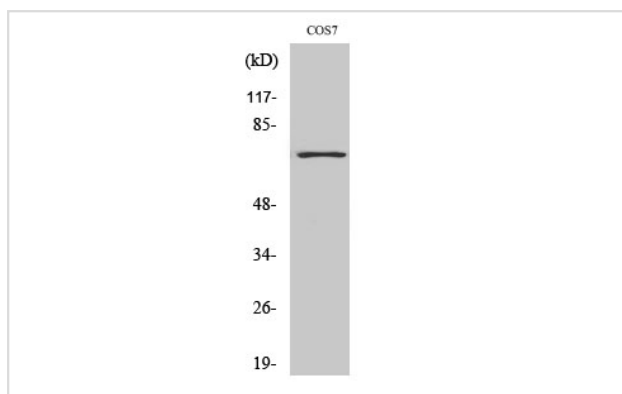
Western Blot: 1/500 - 1/2000.

Immunohistochemistry: 1/100 - 1/300.

ELISA: 1/10000.

Not yet tested in other applications.

Images



Western Blot analysis of COS7 cells using Histone deacetylase 10 Polyclonal Antibody

Note: This product is for in vitro research use only