

Histone H2B Polyclonal Antibody

Catalog No: #41014

Package Size: #41014-1 50ul #41014-2 100ul

Orders: order@signalwayantibody.comSupport: tech@signalwayantibody.com

Description

Product Name	Histone H2B Polyclonal Antibody
Host Species	Rabbit
Clonality	Polyclonal
Purification	The antibody was affinity-purified from rabbit antiserum by affinity-chromatography using epitope-specific immunogen.
Applications	WB IHC IF ELISA
Species Reactivity	Hu Ms
Specificity	Histone H2B Polyclonal Antibody detects endogenous levels of Histone H2B protein.
Immunogen Type	peptide
Immunogen Description	Synthesized peptide derived from human Histone H2B around the non-acetylation site of K5.
Target Name	Histone H2B
Other Names	HIST1H2BC; H2BFL; HIST1H2BE; H2BFH; HIST1H2BF; H2BFG; HIST1H2BG; H2BFA; HIST1H2BI; H2BFK; Histone H2B type 1-C/E/F/G/I; Histone H2B.1 A; Histone H2B.a; H2B/a; Histone H2B.g; H2B/g; Histone H2B.h; H2B/h; Histone H2B.k; H2B/k; Histone H2B.l;
Accession No.	Swiss-Prot: P62807/P06899/Q16778/P57053NCBI Gene ID: 54145
Uniprot	P62807
GeneID	3017;8339;8343;8344;8346;8347;
SDS-PAGE MW	18kd
Concentration	1mg/ml
Formulation	Liquid in PBS containing 50% glycerol, 0.5% BSA and 0.02% sodium azide.
Storage	Store at -20°C/1 year

Application Details

Western Blot: 1/500 - 1/2000.

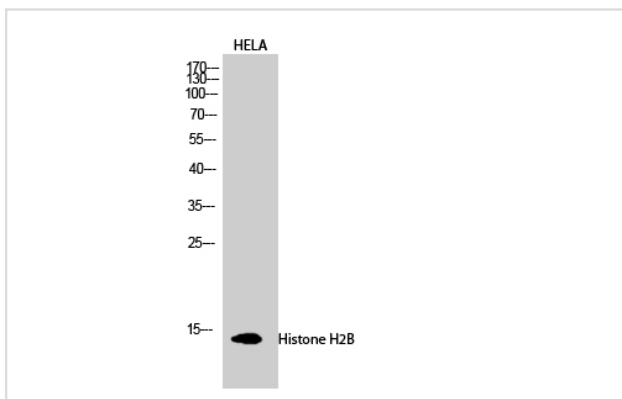
Immunohistochemistry: 1/100 - 1/300.

Immunofluorescence: 1/200 - 1/1000.

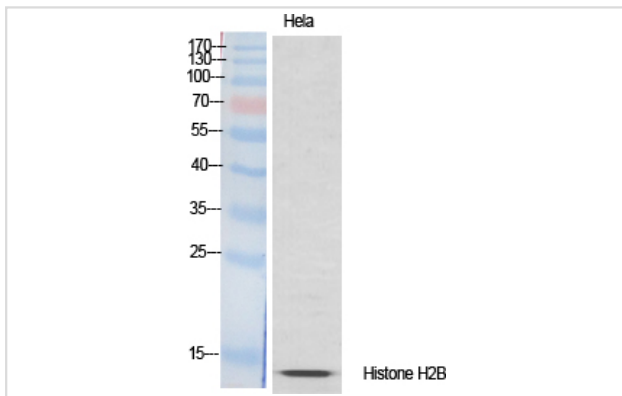
ELISA: 1/20000.

Not yet tested in other applications.

Images



Western Blot analysis of HELA cells using Histone H2B Polyclonal Antibody



Western Blot analysis of HELA cells using Histone H2B Polyclonal Antibody

Note: This product is for in vitro research use only