

Histone H3 Polyclonal Antibody

Catalog No: #41017



Package Size: #41017-1 50ul #41017-2 100ul

Orders: order@signalwayantibody.comSupport: tech@signalwayantibody.com

Description

Product Name	Histone H3 Polyclonal Antibody
Host Species	Rabbit
Clonality	Polyclonal
Purification	The antibody was affinity-purified from rabbit antiserum by affinity-chromatography using epitope-specific immunogen.
Applications	WB IHC IF ELISA
Species Reactivity	Hu Ms Rt
Specificity	Histone H3 Polyclonal Antibody detects endogenous levels of Histone H3 protein.
Immunogen Type	peptide
Immunogen Description	Synthesized peptide derived from human Histone H3 around the non-phosphorylation site of S10.
Target Name	Histone H3
Other Names	HIST1H3A; H3FA; HIST1H3B; H3FL; HIST1H3C; H3FC; HIST1H3D; H3FB; HIST1H3E; H3FD; HIST1H3F; H3FI; HIST1H3G; H3FH; HIST1H3H; H3FK; HIST1H3I; H3FF; HIST1H3J; H3FJ; Histone H3.1; Histone H3/a; Histone H3/b; Histone H3/c; Histone H3/d; Histone H3
Accession No.	Swiss-Prot: P68431/Q71DI3/P84243NCBI Gene ID: 8350/8351/8352/8353/8354/8355/8356/8357/8358/8968
Uniprot	P68431
GeneID	8350;8351;8352;8353;8354;8355;8356;8357;8358;8968;
SDS-PAGE MW	20kd
Concentration	1mg/ml
Formulation	Liquid in PBS containing 50% glycerol, 0.5% BSA and 0.02% sodium azide.
Storage	Store at -20°C/1 year

Application Details

Western Blot: 1/500 - 1/2000.

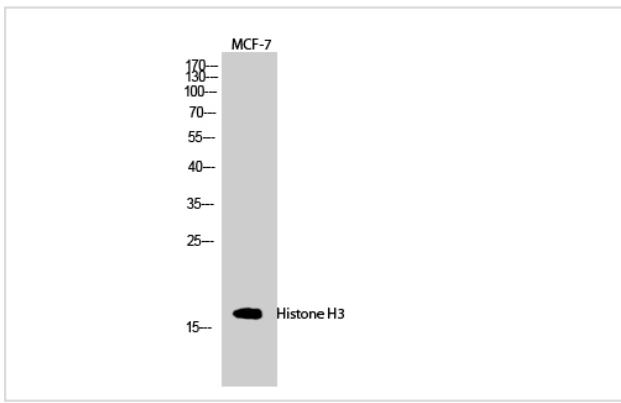
Immunohistochemistry: 1/100 - 1/300.

Immunofluorescence: 1/200 - 1/1000.

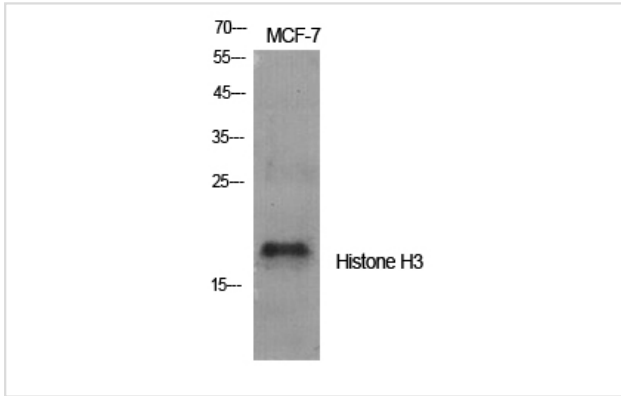
ELISA: 1/20000.

Not yet tested in other applications.

Images



Western Blot analysis of MCF-7 cells using Histone H3 Polyclonal Antibody



Western Blot analysis of MCF7 cells using Histone H3 Polyclonal Antibody

Note: This product is for in vitro research use only