

## HSP60 Polyclonal Antibody

Catalog No: #41046

Package Size: #41046-1 50ul #41046-2 100ul

Orders: [order@signalwayantibody.com](mailto:order@signalwayantibody.com)Support: [tech@signalwayantibody.com](mailto:tech@signalwayantibody.com)

## Description

Product Name	HSP60 Polyclonal Antibody
Host Species	Rabbit
Clonality	Polyclonal
Purification	The antibody was affinity-purified from rabbit antiserum by affinity-chromatography using epitope-specific immunogen.
Applications	WB IHC IF ELISA
Species Reactivity	Hu Ms Rt
Specificity	HSP60 Polyclonal Antibody detects endogenous levels of HSP60 protein.
Immunogen Type	peptide
Immunogen Description	Synthesized peptide derived from the C-terminal region of human HSP60.
Target Name	HSP60
Other Names	HSPD1; HSP60; 60 kDa heat shock protein; mitochondrial; 60 kDa chaperonin; Chaperonin 60; CPN60; Heat shock protein 60; HSP-60; Hsp60; HuCHA60; Mitochondrial matrix protein P1; P60 lymphocyte protein
Accession No.	Swiss-Prot: P10809NCBI Gene ID: 3329
Uniprot	P10809
GeneID	3329;
SDS-PAGE MW	68kd
Concentration	1mg/ml
Formulation	Liquid in PBS containing 50% glycerol, 0.5% BSA and 0.02% sodium azide.
Storage	Store at -20°C/1 year

## Application Details

Western Blot: 1/500 - 1/2000.

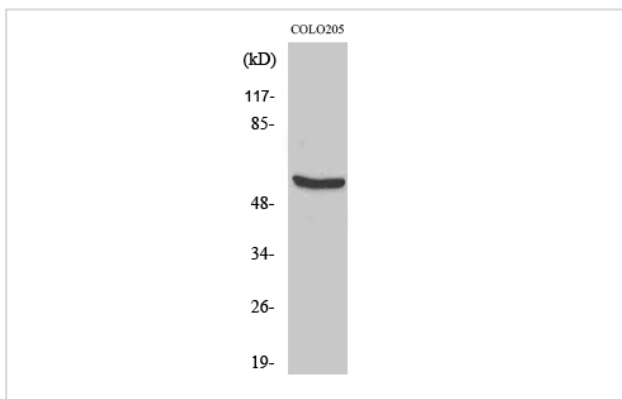
Immunohistochemistry: 1/100 - 1/300.

Immunofluorescence: 1/200 - 1/1000.

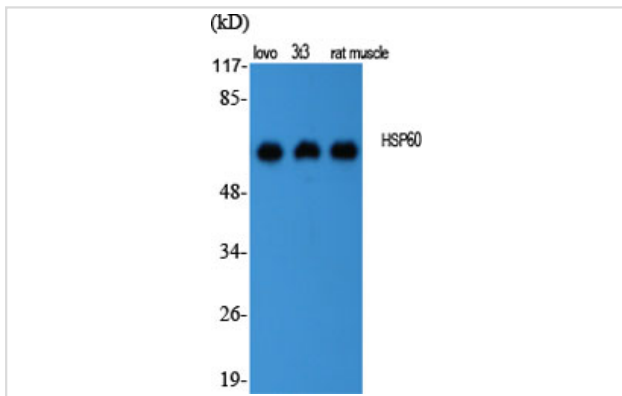
ELISA: 1/10000.

Not yet tested in other applications.

## Images



Western Blot analysis of COLO205 cells using HSP60 Polyclonal Antibody



Western Blot analysis of LOVO NIH-3T3 RAT-MUSCLE cells using HSP60 Polyclonal Antibody

---

Note: This product is for in vitro research use only