

## Fluoroclebopride

Catalog No: #S3187

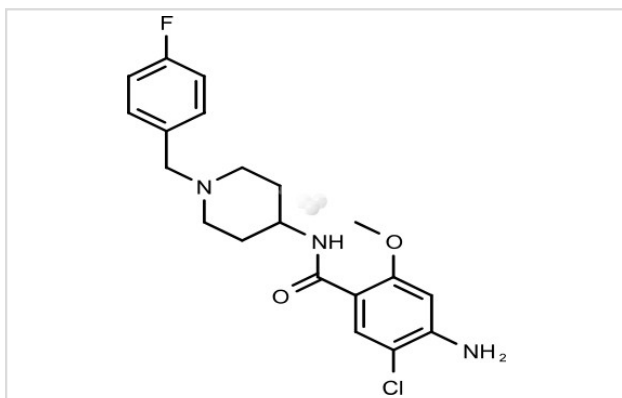
Orders: order@signalwayantibody.com

Support: tech@signalwayantibody.com

## Description

Product Name	Fluoroclebopride
Brief Description	Inhibitors
Purification	99.00%
Target Name	Dopamine Receptor inhibitor
Calculated MW	391.87
Formulation	C <sub>20</sub> H <sub>23</sub> ClFN <sub>3</sub> O <sub>2</sub>
Storage	3 years -20°C powder; 2 years -80°C in solvent;

## Images



## Product Description

Research Area: Nervous system  
 SMILES: COC1=CC(N)=C(Cl)C=C1C(=O)NC1CCN(CC2=CC=C(F)C=C2)CC1  
 Pathways: GPCR/G Protein;  
 Neuroscience Receptor: D2  
 Boiling pt: Melting pt: Solubility: DMSO: 15 mM  
 Appearance: Remark: For obtaining a higher solubility, please warm the tube at 37 °C and shake it in the ultrasonic bath for a while. Stock solution can be stored below -20 °C for several months.

## References

1. Michael A Nader, et al. Neuropsychopharmacology, Volume 21, Issue 4, October 1999, Pages 589-596

Note: This product is for in vitro research use only