

## 15-PGDH antibody

Catalog No: #22626

Orders: order@signalwayantibody.com

Support: tech@signalwayantibody.com

## Description

Product Name	15-PGDH antibody
Host Species	Rabbit
Clonality	Polyclonal
Purification	Purified by antigen-affinity chromatography.
Applications	WB IHC IF
Species Reactivity	Hu
Immunogen Type	Peptide
Immunogen Description	Synthetic peptide contain a sequence corresponding to a region within amino acids 205 and 266 of 15-PGDH
Target Name	15-PGDH
Accession No.	Swiss-Prot:P15428Gene ID:3248
Uniprot	P15428
GeneID	3248;
Concentration	1mg/ml
Formulation	Supplied in 1XPBS, 40% Glycerol (pH7.0). 0.01% Thimerosal was added as a preservative.
Storage	Store at -20°C for long term preservation (recommended). Store at 4°C for short term use.

## Application Details

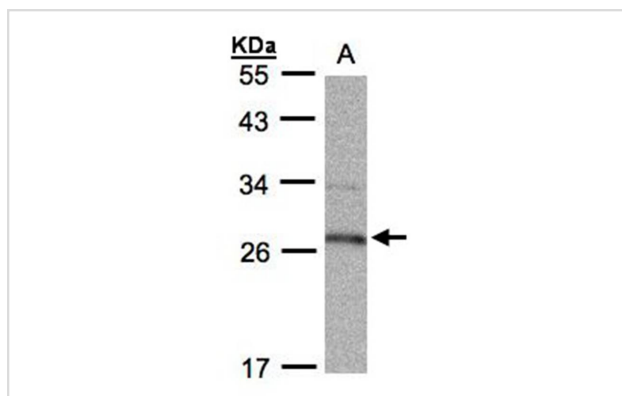
Predicted MW: 29kd

Western blotting: 1:500-1:3000

Immunohistochemistry: 1:50-1:500

Immunofluorescence: 1:100-1:200

## Images

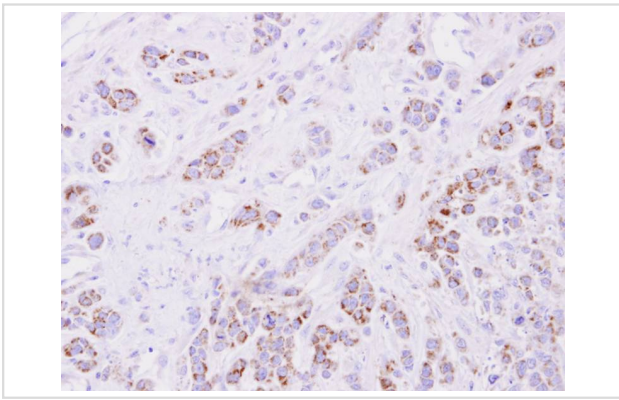


Sample (30ug whole cell lysate)

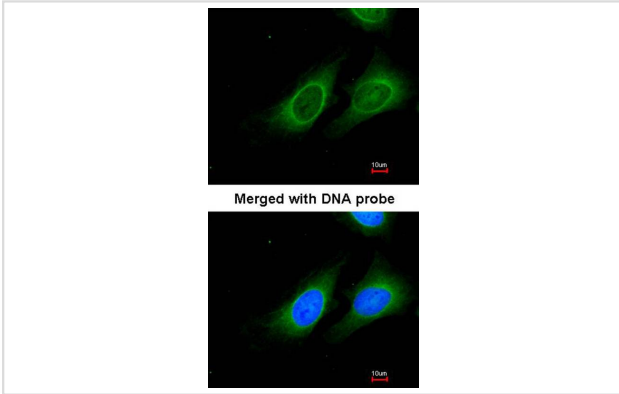
A: Raji

12% SDS PAGE

Primary antibody diluted at 1: 1000



Immunohistochemical analysis of paraffin-embedded MDA-MB-468 xenograft, using 15-PGDH antibody at 1: 500 dilution.



Immunofluorescence analysis of paraformaldehyde-fixed HeLa, using 15-PGDH antibody at 1: 200 dilution.

## Background

This gene encodes a member of the short-chain nonmetalloenzyme alcohol dehydrogenase protein family. The encoded enzyme is responsible for the metabolism of prostaglandins, which function in a variety of physiologic and cellular processes such as inflammation. Mutations in this gene result in primary autosomal recessive hypertrophic osteoarthropathy and craniosteoarthropathy. Multiple transcript variants encoding different isoforms have been found for this gene. [provided by RefSeq]

Note: This product is for in vitro research use only