

HSP90A Polyclonal Antibody

Catalog No: #41047

Package Size: #41047-1 50ul #41047-2 100ul

Orders: order@signalwayantibody.comSupport: tech@signalwayantibody.com

Description

Product Name	HSP90A Polyclonal Antibody
Host Species	Rabbit
Clonality	Polyclonal
Purification	The antibody was affinity-purified from rabbit antiserum by affinity-chromatography using epitope-specific immunogen.
Applications	WB IHC IF ELISA
Species Reactivity	Hu Ms Rt
Specificity	HSP90A Polyclonal Antibody detects endogenous levels of HSP90A protein.
Immunogen Type	peptide
Immunogen Description	Synthesized peptide derived from the C-terminal region of human HSP90A.
Target Name	HSP90A
Other Names	HSP90AA1; HSP90A; HSPC1; HSPCA; Heat shock protein HSP 90-alpha; Heat shock 86 kDa; HSP 86; HSP86; Renal carcinoma antigen NY-REN-38
Accession No.	Swiss-Prot: P07900NCBI Gene ID: 3320
Uniprot	P07900
GeneID	3320;
SDS-PAGE MW	85kd
Concentration	1mg/ml
Formulation	Liquid in PBS containing 50% glycerol, 0.5% BSA and 0.02% sodium azide.
Storage	Store at -20°C/1 year

Application Details

Western Blot: 1/500 - 1/2000.

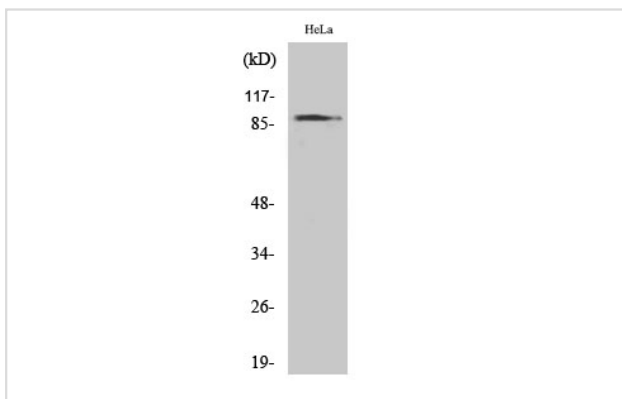
Immunohistochemistry: 1/100 - 1/300.

Immunofluorescence: 1/200 - 1/1000.

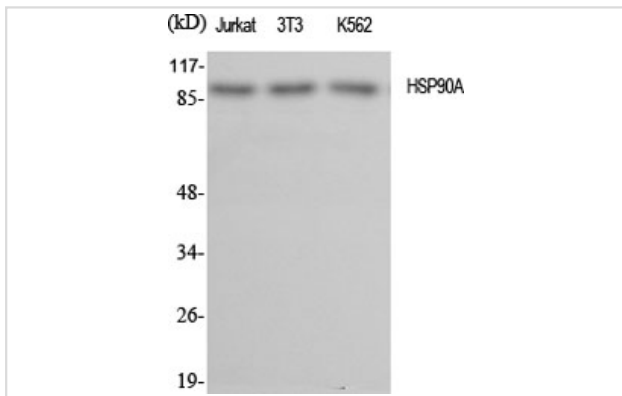
ELISA: 1/40000.

Not yet tested in other applications.

Images



Western Blot analysis of HeLa cells using HSP90A Polyclonal Antibody



Western Blot analysis of Jurkat NIH-3T3 K562 cells using HSP90A Polyclonal Antibody

Note: This product is for in vitro research use only