

## ICAM-1 Polyclonal Antibody

Catalog No: #41050

Package Size: #41050-1 50ul #41050-2 100ul

Orders: order@signalwayantibody.com

Support: tech@signalwayantibody.com

## Description

Product Name	ICAM-1 Polyclonal Antibody
Host Species	Rabbit
Clonality	Polyclonal
Purification	The antibody was affinity-purified from rabbit antiserum by affinity-chromatography using epitope-specific immunogen.
Applications	WB ELISA
Species Reactivity	Hu
Specificity	ICAM-1 Polyclonal Antibody detects endogenous levels of ICAM-1 protein.
Immunogen Type	peptide
Immunogen Description	Synthesized peptide derived from human ICAM-1 around the non-phosphorylation site of Y512.
Target Name	ICAM-1
Other Names	ICAM1; Intercellular adhesion molecule 1; ICAM-1; Major group rhinovirus receptor; CD antigen CD54
Accession No.	Swiss-Prot: P05362NCBI Gene ID: 3383
Uniprot	P05362
GeneID	3383;
SDS-PAGE MW	58kd
Concentration	1mg/ml
Formulation	Liquid in PBS containing 50% glycerol, 0.5% BSA and 0.02% sodium azide.
Storage	Store at -20°C/1 year

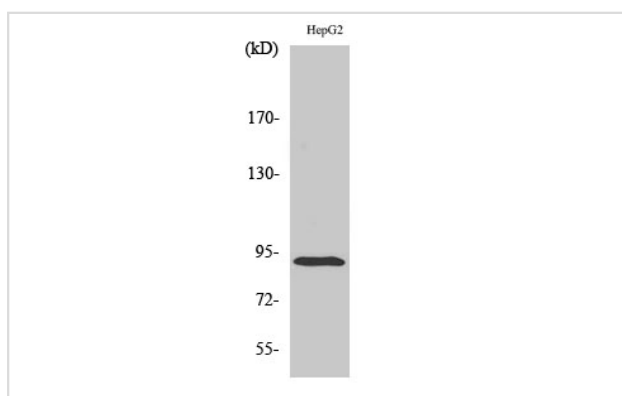
## Application Details

Western Blot: 1/500 - 1/2000.

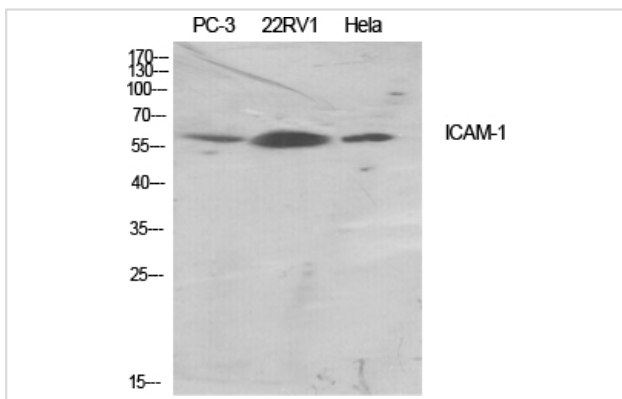
ELISA: 1/10000.

Not yet tested in other applications.

## Images



Western Blot analysis of HepG2 cells using ICAM-1 Polyclonal Antibody



Western Blot analysis of PC3 22RV1 HELA cells using ICAM-1 Polyclonal Antibody

---

Note: This product is for in vitro research use only