

## IFITM3 Polyclonal Antibody

Catalog No: #41051

Package Size: #41051-1 50ul #41051-2 100ul

Orders: [order@signalwayantibody.com](mailto:order@signalwayantibody.com)Support: [tech@signalwayantibody.com](mailto:tech@signalwayantibody.com)

## Description

|                       |   |
|-----------------------|---|
| Product Name          | IFITM3 Polyclonal Antibody  |
| Host Species          | Rabbit  |
| Clonality             | Polyclonal  |
| Purification          | The antibody was affinity-purified from rabbit antiserum by affinity-chromatography using epitope-specific immunogen.         |
| Applications          | WB IF ELISA   |
| Species Reactivity    | Hu  |
| Specificity           | IFITM3 Polyclonal Antibody detects endogenous levels of IFITM3 protein.   |
| Immunogen Type        | peptide   |
| Immunogen Description | Synthesized peptide derived from the N-terminal region of human IFITM3.   |
| Target Name           | IFITM3  |
| Other Names           | IFITM3; Interferon-induced transmembrane protein 3; Dispanin subfamily A member 2b; DSPA2b; Interferon-inducible protein 1-8U |
| Accession No.         | Swiss-Prot: Q01628NCBI Gene ID: 10410   |
| Uniprot               | Q01628  |
| GeneID                | 10410;  |
| SDS-PAGE MW           | 15kd  |
| Concentration         | 1mg/ml  |
| Formulation           | Liquid in PBS containing 50% glycerol, 0.5% BSA and 0.02% sodium azide.   |
| Storage               | Store at -20°C/1 year   |

## Application Details

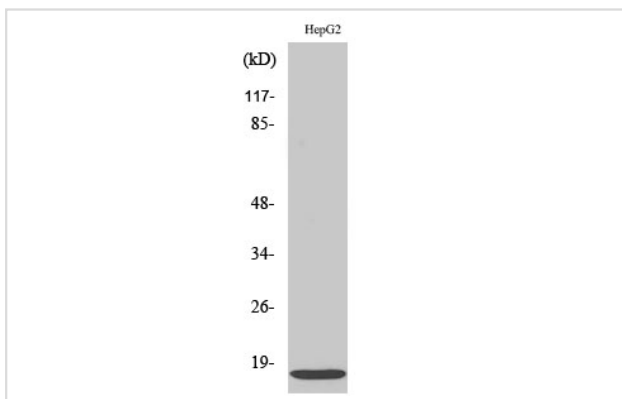
Western Blot: 1/500 - 1/2000.

Immunofluorescence: 1/200 - 1/1000.

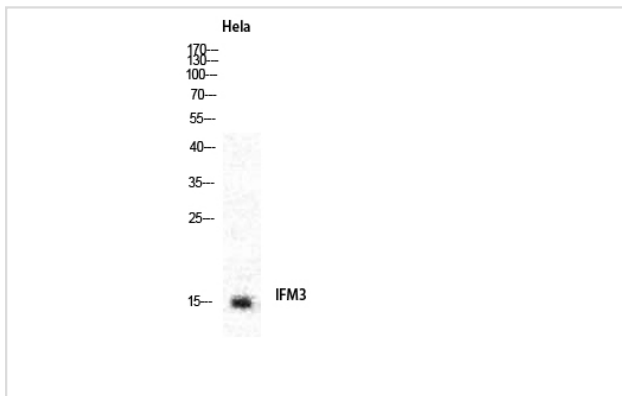
ELISA: 1/40000.

Not yet tested in other applications.

## Images



Western blot analysis of HeLa cells using IFITM3 Polyclonal Antibody



Western Blot analysis of HELA cells using IFITM3 Polyclonal Antibody

---

Note: This product is for in vitro research use only