

IFN- $\gamma$  Polyclonal Antibody

Catalog No: #41052

Package Size: #41052-1 50ul #41052-2 100ul

Orders: [order@signalwayantibody.com](mailto:order@signalwayantibody.com)Support: [tech@signalwayantibody.com](mailto:tech@signalwayantibody.com)

## Description

Product Name	IFN- $\gamma$ Polyclonal Antibody
Host Species	Rabbit
Clonality	Polyclonal
Purification	The antibody was affinity-purified from rabbit antiserum by affinity-chromatography using epitope-specific immunogen.
Applications	WB IHC ELISA IF
Species Reactivity	Hu Ms Rt
Specificity	IFN- $\gamma$ Polyclonal Antibody detects endogenous levels of IFN- $\gamma$ protein.
Immunogen Description	Synthesized peptide derived from the Internal region of human IFN- $\gamma$ .
Target Name	IFN- $\gamma$
Other Names	IFNG; Interferon gamma; IFN-gamma; Immune interferon
Accession No.	Swiss-Prot: P01579NCBI Gene ID: 3458
Uniprot	P01579
GeneID	3458;
SDS-PAGE MW	17kd
Concentration	1mg/ml
Formulation	Liquid in PBS containing 50% glycerol, 0.5% BSA and 0.02% sodium azide.
Storage	Store at -20°C/1 year

## Application Details

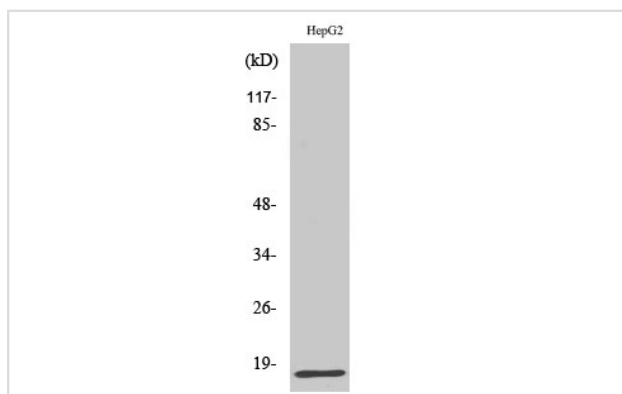
Western Blot: 1/500 - 1/2000.

Immunohistochemistry: 1/100 - 1/300.

ELISA: 1/40000.

Not yet tested in other applications.

## Images

Western Blot analysis of HepG2 cells using IFN- $\gamma$  Polyclonal Antibody

---

Note: This product is for in vitro research use only