

## IGF-IR Polyclonal Antibody

Catalog No: #41053

Package Size: #41053-1 50ul #41053-2 100ul

Orders: [order@signalwayantibody.com](mailto:order@signalwayantibody.com)Support: [tech@signalwayantibody.com](mailto:tech@signalwayantibody.com)

## Description

Product Name	IGF-IR Polyclonal Antibody
Host Species	Rabbit
Clonality	Polyclonal
Purification	The antibody was affinity-purified from rabbit antiserum by affinity-chromatography using epitope-specific immunogen.
Applications	WB IHC ELISA IF
Species Reactivity	Hu Ms Rt
Specificity	IGF-IR Polyclonal Antibody detects endogenous levels of IGF-IR protein.
Immunogen Description	Synthesized peptide derived from human IGF-IR around the non-phosphorylation site of Y1161.
Target Name	IGF-IR
Other Names	IGF1R; Insulin-like growth factor 1 receptor; Insulin-like growth factor I receptor; IGF-I receptor; CD antigen CD221; INSR; Insulin receptor; IR; CD antigen CD220
Accession No.	Swiss-Prot: P08069/P06213NCBI Gene ID: 3480/3643
Uniprot	P08069
GeneID	3480;
SDS-PAGE MW	155kd
Concentration	1mg/ml
Formulation	Liquid in PBS containing 50% glycerol, 0.5% BSA and 0.02% sodium azide.
Storage	Store at -20°C/1 year

## Application Details

Western Blot: 1/500 - 1/2000.

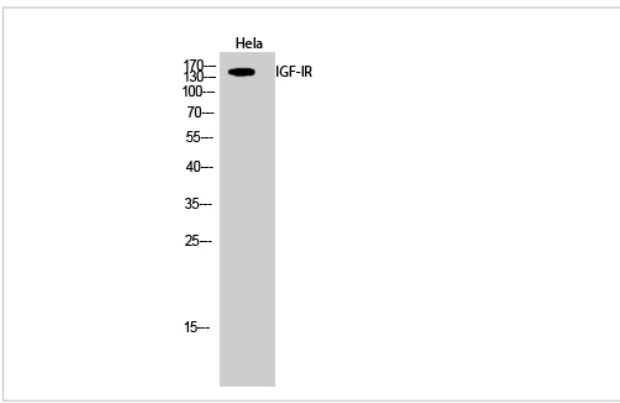
Immunohistochemistry: 1/100 - 1/300.

ELISA: 1/10000.

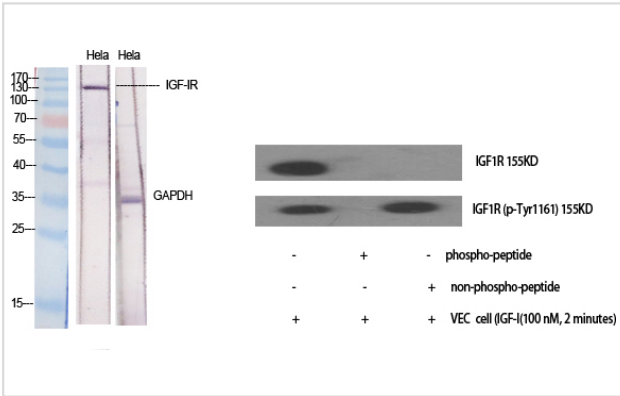
IF: 1:50-200

Not yet tested in other applications.

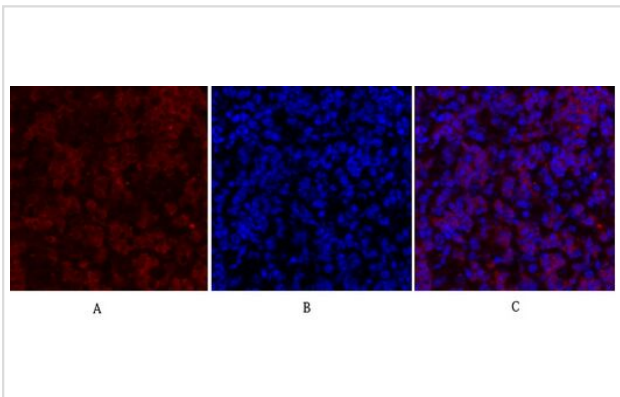
## Images



Western Blot analysis of HeLa cells using IGF-IR Polyclonal Antibody



Western Blot analysis of HeLa VEC+IGF cells using IGF-IR Polyclonal Antibody



Immunofluorescence analysis of mouse-lung tissue. 1, IGF-IR Polyclonal Antibody (red) was diluted at 1:200 (4°C, overnight). 2, Cy3 labeled Secondary antibody was diluted at 1:300 (room temperature, 50min). 3, Picture B: DAPI (blue) 10min. Picture A: Target. Picture B: DAPI. Picture C: merge of A+B

Note: This product is for in vitro research use only