

IKK $\alpha$  Polyclonal Antibody

Catalog No: #41056

Package Size: #41056-1 50ul #41056-2 100ul

Orders: [order@signalwayantibody.com](mailto:order@signalwayantibody.com)Support: [tech@signalwayantibody.com](mailto:tech@signalwayantibody.com)

## Description

Product Name	IKK $\alpha$ Polyclonal Antibody
Host Species	Rabbit
Clonality	Polyclonal
Purification	The antibody was affinity-purified from rabbit antiserum by affinity-chromatography using epitope-specific immunogen.
Applications	WB IHC ELISA
Species Reactivity	Hu Ms Rt
Specificity	IKK $\alpha$ Polyclonal Antibody detects endogenous levels of IKK $\alpha$ protein.
Immunogen Type	peptide
Immunogen Description	Synthesized peptide derived from human IKK $\alpha$ around the non-phosphorylation site of T23.
Target Name	IKK $\alpha$
Other Names	CHUK; IKKA; TCF16; Inhibitor of nuclear factor kappa-B kinase subunit alpha; I-kappa-B kinase alpha; IKK-A; IKK-alpha; IkbKA; IkappaB kinase; Conserved helix-loop-helix ubiquitous kinase; I-kappa-B kinase 1; IKK1; Nuclear factor NF-kappa-B
Accession No.	Swiss-Prot: O15111NCBI Gene ID: 1147
Uniprot	O15111
GeneID	1147;
SDS-PAGE MW	85kd
Concentration	1mg/ml
Formulation	Liquid in PBS containing 50% glycerol, 0.5% BSA and 0.02% sodium azide.
Storage	Store at -20°C/1 year

## Application Details

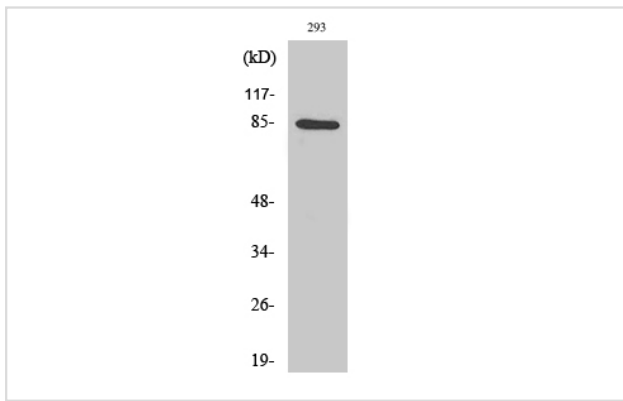
Western Blot: 1/500 - 1/2000.

Immunohistochemistry: 1/100 - 1/300.

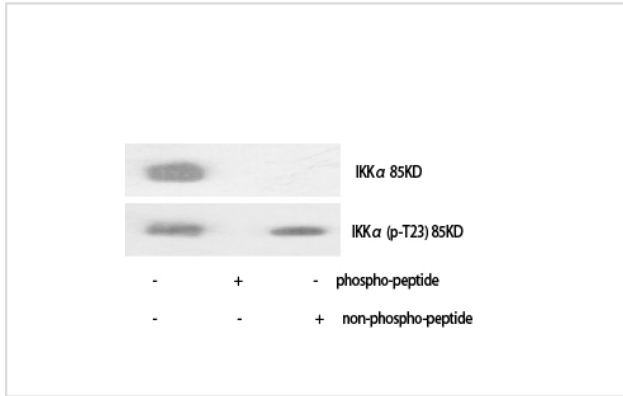
ELISA: 1/10000.

Not yet tested in other applications.

## Images



Western Blot analysis of 293 cells using IKK $\alpha$  Polyclonal Antibody



Western Blot analysis of various cells using IKK $\alpha$  Polyclonal Antibody

Note: This product is for in vitro research use only