

IKK α / β Polyclonal Antibody

Catalog No: #41057

Package Size: #41057-1 50ul #41057-2 100ul

Orders: order@signalwayantibody.comSupport: tech@signalwayantibody.com

Description

Product Name	IKK α / β Polyclonal Antibody
Host Species	Rabbit
Clonality	Polyclonal
Purification	The antibody was affinity-purified from rabbit antiserum by affinity-chromatography using epitope-specific immunogen.
Applications	WB IHC ELISA
Species Reactivity	Hu Ms Rt
Specificity	IKK α / β Polyclonal Antibody detects endogenous levels of IKK α / β protein.
Immunogen Type	peptide
Immunogen Description	Synthesized peptide derived from human IKK α / β around the non-phosphorylation site of S176/177.
Target Name	IKK α / β
Other Names	CHUK; IKKA; TCF16; Inhibitor of nuclear factor kappa-B kinase subunit alpha; I-kappa-B kinase alpha; IKK-A; IKK-alpha; IkbKA; IkappaB kinase; Conserved helix-loop-helix ubiquitous kinase; I-kappa-B kinase 1; IKK1; Nuclear factor NF-kappa-B
Accession No.	Swiss-Prot: O15111/O14920NCBI Gene ID: 1147/3551
Uniprot	O15111
GeneID	1147;
SDS-PAGE MW	84kd
Concentration	1mg/ml
Formulation	Liquid in PBS containing 50% glycerol, 0.5% BSA and 0.02% sodium azide.
Storage	Store at -20°C/1 year

Application Details

Western Blot: 1/500 - 1/2000.

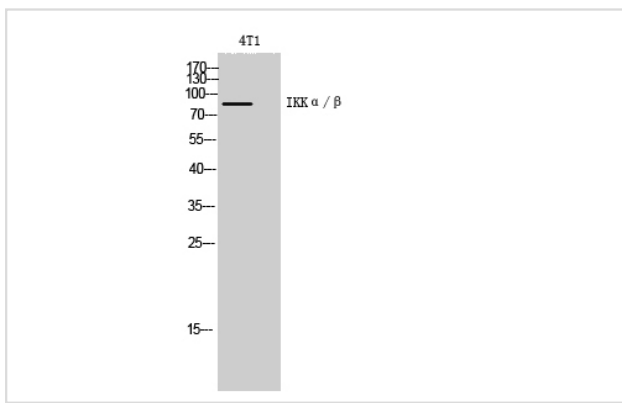
Immunohistochemistry: 1/100 - 1/300.

ELISA: 1/20000.

Not yet tested in other applications.

Images

Western Blot analysis of 4T1 cells using IKK α / β Polyclonal Antibody



Note: This product is for in vitro research use only