

IL-13R $\alpha$ 1 Polyclonal Antibody

Catalog No: #41058

Package Size: #41058-1 50ul #41058-2 100ul

Orders: [order@signalwayantibody.com](mailto:order@signalwayantibody.com)Support: [tech@signalwayantibody.com](mailto:tech@signalwayantibody.com)

## Description

Product Name	IL-13R $\alpha$ 1 Polyclonal Antibody
Host Species	Rabbit
Clonality	Polyclonal
Purification	The antibody was affinity-purified from rabbit antiserum by affinity-chromatography using epitope-specific immunogen.
Applications	WB IHC IF ELISA
Species Reactivity	Hu Ms Rt
Specificity	IL-13R $\alpha$ 1 Polyclonal Antibody detects endogenous levels of IL-13R $\alpha$ 1 protein.
Immunogen Type	peptide
Immunogen Description	Synthesized peptide derived from human IL-13R $\alpha$ 1 around the non-phosphorylation site of Y405.
Target Name	IL-13R $\alpha$ 1
Other Names	IL13RA1; IL13R; IL13RA; Interleukin-13 receptor subunit alpha-1; IL-13 receptor subunit alpha-1; IL-13R subunit alpha-1; IL-13R-alpha-1; IL-13RA1; Cancer/testis antigen 19; CT19; CD antigen CD213a1
Accession No.	Swiss-Prot: P78552NCBI Gene ID: 3597
Uniprot	P78552
GeneID	3597;
SDS-PAGE MW	49kd
Concentration	1mg/ml
Formulation	Liquid in PBS containing 50% glycerol, 0.5% BSA and 0.02% sodium azide.
Storage	Store at -20°C/1 year

## Application Details

Western Blot: 1/500 - 1/2000.

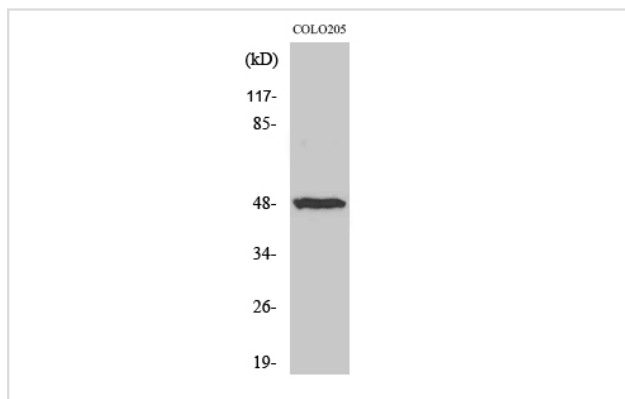
Immunohistochemistry: 1/100 - 1/300.

Immunofluorescence: 1/200 - 1/1000.

ELISA: 1/10000.

Not yet tested in other applications.

## Images



Western Blot analysis of COLO205 cells using IL-13R $\alpha$ 1 Polyclonal Antibody

---

Note: This product is for in vitro research use only