

Inhibin  $\beta$ -B Polyclonal Antibody

Catalog No: #41064

Package Size: #41064-1 50ul #41064-2 100ul

Orders: [order@signalwayantibody.com](mailto:order@signalwayantibody.com)Support: [tech@signalwayantibody.com](mailto:tech@signalwayantibody.com)

## Description

Product Name	Inhibin $\beta$ -B Polyclonal Antibody
Host Species	Rabbit
Clonality	Polyclonal
Purification	The antibody was affinity-purified from rabbit antiserum by affinity-chromatography using epitope-specific immunogen.
Applications	WB ELISA
Species Reactivity	Hu Ms Rt
Specificity	Inhibin $\beta$ -B Polyclonal Antibody detects endogenous levels of Inhibin $\beta$ -B protein.
Immunogen Type	peptide
Immunogen Description	Synthesized peptide derived from the Internal region of human Inhibin $\beta$ -B.
Target Name	Inhibin $\beta$ -B
Other Names	INHBB; Inhibin beta B chain; Activin beta-B chain
Accession No.	Swiss-Prot: P09529NCBI Gene ID: 3625
Uniprot	P09529
GeneID	3625;
SDS-PAGE MW	45kd
Concentration	1mg/ml
Formulation	Liquid in PBS containing 50% glycerol, 0.5% BSA and 0.02% sodium azide.
Storage	Store at -20°C/1 year

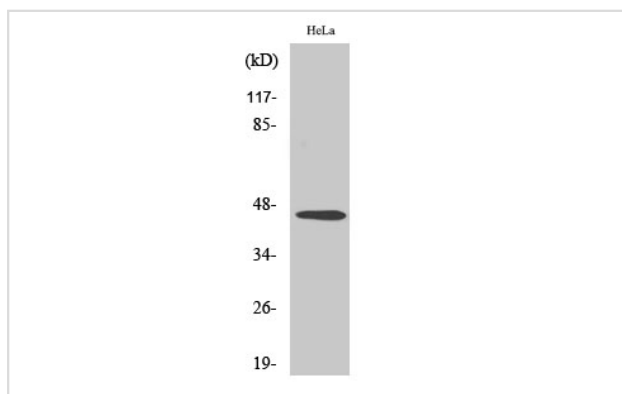
## Application Details

Western Blot: 1/500 - 1/2000.

ELISA: 1/10000.

Not yet tested in other applications.

## Images

Western Blot analysis of A549 cells using Inhibin  $\beta$ -B Polyclonal Antibody

---

Note: This product is for in vitro research use only