

InsP 3-kinase C Polyclonal Antibody

Catalog No: #41065

Package Size: #41065-1 50ul #41065-2 100ul

Orders: order@signalwayantibody.comSupport: tech@signalwayantibody.com

Description

Product Name	InsP 3-kinase C Polyclonal Antibody
Host Species	Rabbit
Clonality	Polyclonal
Purification	The antibody was affinity-purified from rabbit antiserum by affinity-chromatography using epitope-specific immunogen.
Applications	WB IHC ELISA
Species Reactivity	Hu
Specificity	InsP 3-kinase C Polyclonal Antibody detects endogenous levels of InsP 3-kinase C protein.
Immunogen Type	peptide
Immunogen Description	Synthesized peptide derived from the Internal region of human InsP 3-kinase C.
Target Name	InsP 3-kinase C
Other Names	ITPKC; IP3KC; Inositol-trisphosphate 3-kinase C; Inositol 1; 4,5-trisphosphate 3-kinase C; IP3 3-kinase C; IP3K C; InsP 3-kinase C
Accession No.	Swiss-Prot: Q96DU7NCBI Gene ID: 80271
Uniprot	Q96DU7
GeneID	80271;
SDS-PAGE MW	102kd
Concentration	1mg/ml
Formulation	Liquid in PBS containing 50% glycerol, 0.5% BSA and 0.02% sodium azide.
Storage	Store at -20°C/1 year

Application Details

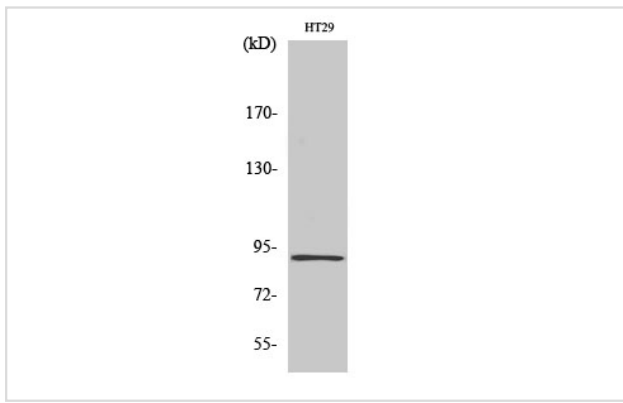
Western Blot: 1/500 - 1/2000.

Immunohistochemistry: 1/100 - 1/300.

ELISA: 1/10000.

Not yet tested in other applications.

Images



Western Blot analysis of HT29 cells using InsP 3-kinase C Polyclonal Antibody

Note: This product is for in vitro research use only