

## Insulin R Polyclonal Antibody

Catalog No: #41066

Package Size: #41066-1 50ul #41066-2 100ul

Orders: order@signalwayantibody.com

Support: tech@signalwayantibody.com

## Description

Product Name	Insulin R Polyclonal Antibody
Host Species	Rabbit
Clonality	Polyclonal
Purification	The antibody was affinity-purified from rabbit antiserum by affinity-chromatography using epitope-specific immunogen.
Applications	WB ELISA IHC IF
Species Reactivity	Hu Ms Rt Mk
Specificity	Insulin R Polyclonal Antibody detects endogenous levels of Insulin R protein.
Immunogen Description	Synthesized peptide derived from human Insulin R around the non-phosphorylation site of Y1361.
Target Name	Insulin R
Other Names	INSR; Insulin receptor; IR; CD antigen CD220
Accession No.	Swiss-Prot: P06213NCBI Gene ID: 3643
Uniprot	P06213
GeneID	3643;
SDS-PAGE MW	95kd
Concentration	1mg/ml
Formulation	Liquid in PBS containing 50% glycerol, 0.5% BSA and 0.02% sodium azide.
Storage	Store at -20°C/1 year

## Application Details

Western Blot: 1/500 - 1/2000.

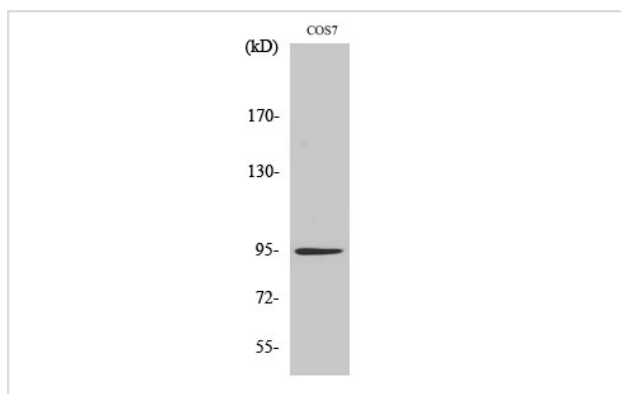
IHC: 1/100 - 1/300

IF : 1/50 - 1/300

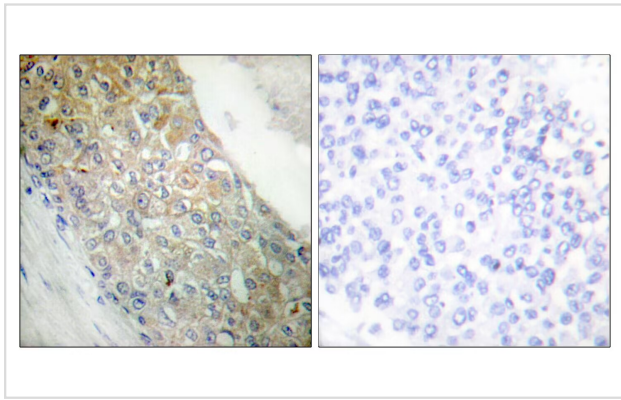
ELISA: 1/5000.

Not yet tested in other applications.

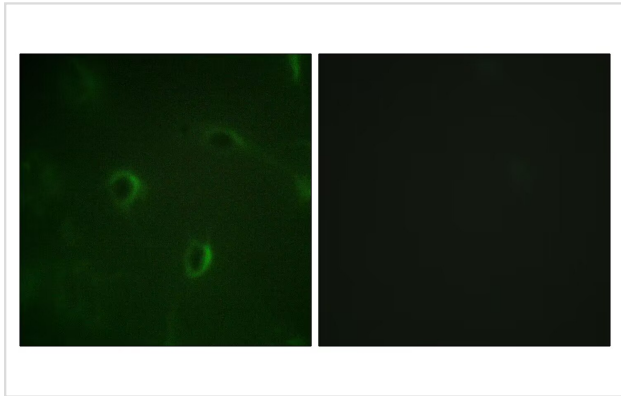
## Images



Western Blot analysis of LOVO cells using Insulin R Polyclonal Antibody



Immunohistochemistry analysis of paraffin-embedded human breast carcinoma tissue, using IR Antibody. The picture on the right is blocked with the synthesized peptide.



Immunofluorescence analysis of HUVEC cells, using IR Antibody. The picture on the right is blocked with the synthesized peptide.

---

Note: This product is for in vitro research use only