

Integrin  $\beta$ 1 Polyclonal Antibody

Catalog No: #41069

Package Size: #41069-1 50ul #41069-2 100ul

Orders: [order@signalwayantibody.com](mailto:order@signalwayantibody.com)Support: [tech@signalwayantibody.com](mailto:tech@signalwayantibody.com)

## Description

Product Name	Integrin $\beta$ 1 Polyclonal Antibody
Host Species	Rabbit
Clonality	Polyclonal
Purification	The antibody was affinity-purified from rabbit antiserum by affinity-chromatography using epitope-specific immunogen.
Applications	WB ELISA
Species Reactivity	Hu Ms Rt
Specificity	Integrin $\beta$ 1 Polyclonal Antibody detects endogenous levels of Integrin $\beta$ 1 protein.
Immunogen Type	peptide
Immunogen Description	Synthesized peptide derived from human Integrin $\beta$ 1 around the non-phosphorylation site of T788.
Target Name	Integrin $\beta$ 1
Other Names	ITGB1; FNRB; MDF2; MSK12; Integrin beta-1; Fibronectin receptor subunit beta; VLA-4 subunit beta; CD antigen CD29
Accession No.	Swiss-Prot: P05556NCBI Gene ID: 3688
Uniprot	P05556
GeneID	3688;
SDS-PAGE MW	135kd
Concentration	1mg/ml
Formulation	Liquid in PBS containing 50% glycerol, 0.5% BSA and 0.02% sodium azide.
Storage	Store at -20°C/1 year

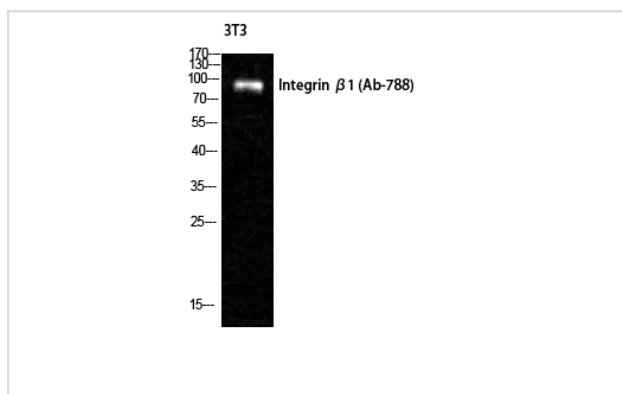
## Application Details

Western Blot: 1/500 - 1/2000.

ELISA: 1/5000.

Not yet tested in other applications.

## Images

Western Blot analysis of NIH-3T3 cells using Integrin  $\beta$ 1 Polyclonal Antibody

---

Note: This product is for in vitro research use only