

Integrin  $\beta$ 3 Polyclonal Antibody

Catalog No: #41070

Package Size: #41070-1 50ul #41070-2 100ul

Orders: [order@signalwayantibody.com](mailto:order@signalwayantibody.com)Support: [tech@signalwayantibody.com](mailto:tech@signalwayantibody.com)

## Description

Product Name	Integrin $\beta$ 3 Polyclonal Antibody
Host Species	Rabbit
Clonality	Polyclonal
Purification	The antibody was affinity-purified from rabbit antiserum by affinity-chromatography using epitope-specific immunogen.
Applications	WB IHC ELISA IF
Species Reactivity	Hu Ms Rt
Specificity	Integrin $\beta$ 3 Polyclonal Antibody detects endogenous levels of Integrin $\beta$ 3 protein.
Immunogen Description	Synthesized peptide derived from human Integrin $\beta$ 3 around the non-phosphorylation site of Y785.
Target Name	Integrin $\beta$ 3
Other Names	ITGB3; GP3A; Integrin beta-3; Platelet membrane glycoprotein IIIa; GPIIIa; CD antigen CD61
Accession No.	Swiss-Prot: P05106NCBI Gene ID: 3690
Uniprot	P05106
GeneID	3690;
SDS-PAGE MW	130kd
Concentration	1mg/ml
Formulation	Liquid in PBS containing 50% glycerol, 0.5% BSA and 0.02% sodium azide.
Storage	Store at -20°C/1 year

## Application Details

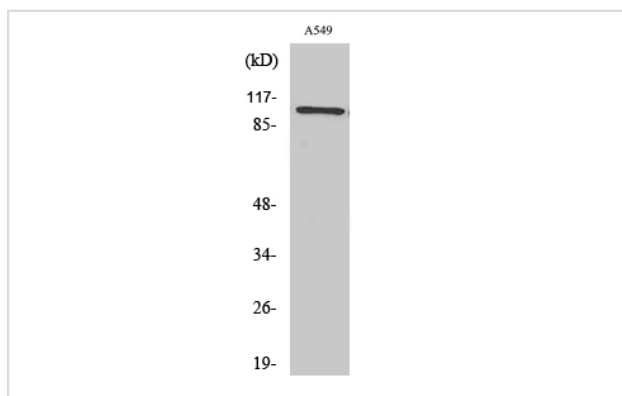
Western Blot: 1/500 - 1/2000.

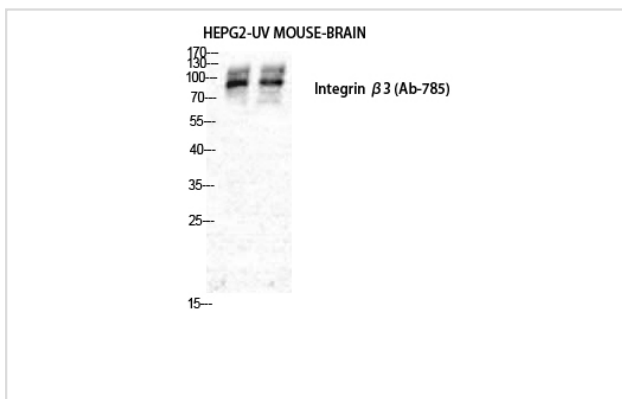
Immunohistochemistry: 1/100 - 1/300.

ELISA: 1/10000.

Not yet tested in other applications.

## Images

Western Blot analysis of NIH-3T3 cells using Integrin  $\beta$ 3 Polyclonal Antibody



Western Blot analysis of HepG2-UV MOUSE-BRAIN cells using Integrin  $\beta$ 3 Polyclonal Antibody

---

Note: This product is for in vitro research use only