

Pinostilbene

Catalog No: #S3755

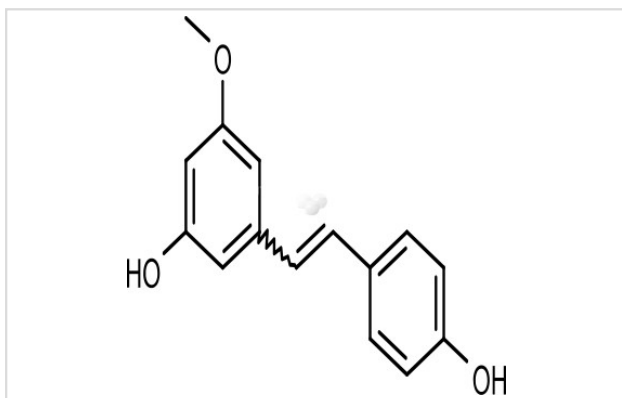
Orders: order@signalwayantibody.com

Support: tech@signalwayantibody.com

Description

Product Name	Pinostilbene
Brief Description	Inhibitors
Purification	98.00%
Target Name	Others
Calculated MW	242.273
Formulation	C15H14O3
Storage	3 years -20°C powder;2 years -80°C in solvent;

Images



Product Description

Research Area:OthersSMILES:COC1=CC(=CC(=C1)O)/C=C/C2=CC=C(C=C2)OPathways:OthersReceptor:OthersBoiling pt:Melting pt:Solubility:Soluble in Chloroform, Dichloromethane, Ethyl Acetate, DMSO, AcetoneAppearance:Remark:For obtaining a higher solubility , please warm the tube at 37 °C and shake it in the ultrasonic bath for a while.Stock solution can be stored below -20 °C for several month.

References

1.Chao J,et al.Protective effects of pinostilbene, a resveratrol methylated derivative, against 6-hydroxydopamine-induced neurotoxicity in SH-SY5Y cells. 2010 Jun;21(6):482-9.

Note: This product is for in vitro research use only