

kaempferide

Catalog No: #S3806

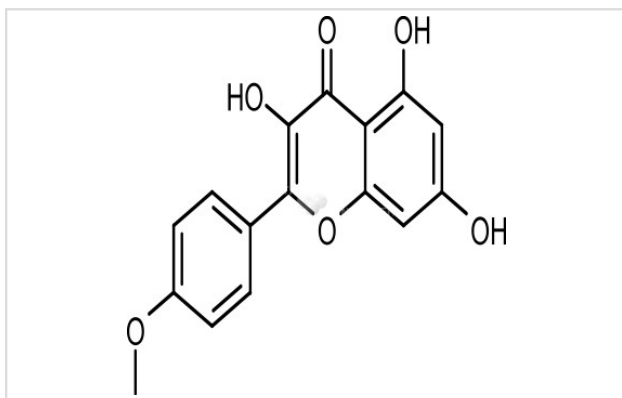
Orders: order@signalwayantibody.com

Support: tech@signalwayantibody.com

Description

Product Name	kaempferide
Brief Description	Inhibitors
Purification	98.00%
Target Name	Estrogen/progestogen Receptor inhibitor
Calculated MW	300.266
Formulation	C16H12O6
Storage	3 years -20°C powder;2 years -80°C in solvent;

Images



Product Description

Research Area:OthersSMILES:COC1=CC=C(C=C1)C2=C(C(=O)C3=C(C=C(C=C3O)O)O)OPathways:Endocrinology/HormonesReceptor:ERBoiling pt:Melting pt:Solubility:Soluble in Chloroform, Dichloromethane, Ethyl Acetate, DMSO, AcetoneAppearance:Remark:For obtaining a higher solubility , please warm the tube at 37 °C and shake it in the ultrasonic bath for a while.Stock solution can be stored below -20 °C for several month.

References

1. Song P, et al. [Comparison of effects of kaempferide and anhydrocaritin on biomineralization of cultured osteoblasts]. Yao Xue Xue Bao. 2012 Jul;47(7):890-6.

Note: This product is for in vitro research use only