

Laminin γ -3 Polyclonal Antibody

Catalog No: #41103

Package Size: #41103-1 50ul #41103-2 100ul

Orders: order@signalwayantibody.comSupport: tech@signalwayantibody.com

Description

Product Name	Laminin γ -3 Polyclonal Antibody
Host Species	Rabbit
Clonality	Polyclonal
Purification	The antibody was affinity-purified from rabbit antiserum by affinity-chromatography using epitope-specific immunogen.
Applications	WB IHC IF ELISA
Species Reactivity	Hu Ms
Specificity	Laminin γ -3 Polyclonal Antibody detects endogenous levels of Laminin γ -3 protein.
Immunogen Type	peptide
Immunogen Description	Synthesized peptide derived from the C-terminal region of human Laminin γ -3.
Target Name	Laminin γ -3
Other Names	LAMC3; Laminin subunit gamma-3; Laminin-12 subunit gamma; Laminin-14 subunit gamma; Laminin-15 subunit gamma
Accession No.	Swiss-Prot: Q9Y6N6NCBI Gene ID: 10319
Uniprot	Q9Y6N6
GeneID	10319;
SDS-PAGE MW	170kd
Concentration	1mg/ml
Formulation	Liquid in PBS containing 50% glycerol, 0.5% BSA and 0.02% sodium azide.
Storage	Store at -20°C/1 year

Application Details

Western Blot: 1/500 - 1/2000.

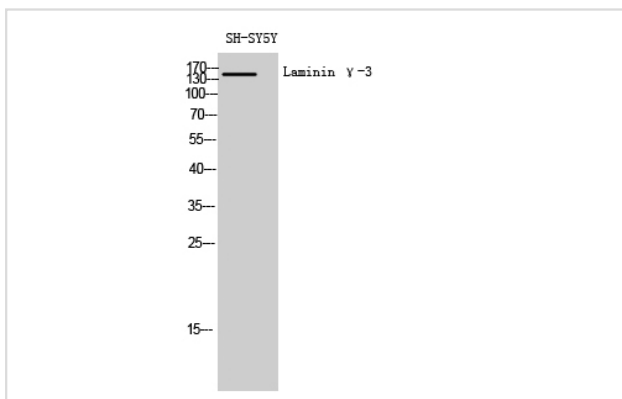
Immunohistochemistry: 1/100 - 1/300.

Immunofluorescence: 1/200 - 1/1000.

ELISA: 1/40000.

Not yet tested in other applications.

Images



Western Blot analysis of SH-SY5Y cells using Laminin γ -3 Polyclonal Antibody

Note: This product is for in vitro research use only