

scopolin

Catalog No: #S3888

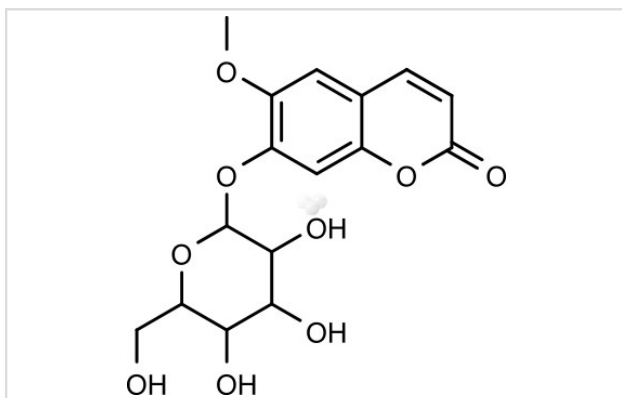
Orders: order@signalwayantibody.com

Support: tech@signalwayantibody.com

Description

Product Name	scopolin
Brief Description	Inhibitors
Purification	99.00%
Target Name	Others inhibitor
Calculated MW	354.311
Formulation	C16H18O9
Storage	3 years -20°C powder;2 years -80°C in solvent;

Images



Product Description

Research

Area:OthersSMILES:COC1=C(C=C2C(=C1)C=CC(=O)O2)O[C@H]3[C@@H]([C@H]([C@@H]([C@H](O3)CO)O)O)OPathways:OthersReceptor:Othe
rsBoiling pt:Melting pt:Solubility:Soluble in Pyridine, Methanol, EthanolAppearance:Remark:For obtaining a higher solubility , please warm the tube at
37 °C and shake it in the ultrasonic bath for a while.Stock solution can be stored below -20 °C for several month.

References

1. Pan R,et al. Scopolin isolated from *Erycibe obtusifolia* Benth stems suppresses adjuvant-induced rat arthritis by inhibiting inflammation and angiogenesis. *Int Immunopharmacol.* 2009 Jul;9(7-8):859-69.

Note: This product is for in vitro research use only