

LIMK-1/2 Polyclonal Antibody

Catalog No: #41108

Package Size: #41108-1 50ul #41108-2 100ul

Orders: order@signalwayantibody.comSupport: tech@signalwayantibody.com

Description

Product Name	LIMK-1/2 Polyclonal Antibody
Host Species	Rabbit
Clonality	Polyclonal
Purification	The antibody was affinity-purified from rabbit antiserum by affinity-chromatography using epitope-specific immunogen.
Applications	WB IHC ELISA
Species Reactivity	Hu Ms Rt Mk
Specificity	LIMK-1/2 Polyclonal Antibody detects endogenous levels of LIMK-1/2 protein.
Immunogen Type	peptide
Immunogen Description	Synthesized peptide derived from human LIMK-1/2 around the non-phosphorylation site of T508/505.
Target Name	LIMK-1/2
Other Names	LIMK1; LIMK; LIM domain kinase 1; LIMK-1; LIMK2; LIM domain kinase 2; LIMK-2
Accession No.	Swiss-Prot: P53667/P53671NCBI Gene ID: 3984/3985
Uniprot	P53667
GeneID	3984;
SDS-PAGE MW	72kd
Concentration	1mg/ml
Formulation	Liquid in PBS containing 50% glycerol, 0.5% BSA and 0.02% sodium azide.
Storage	Store at -20°C/1 year

Application Details

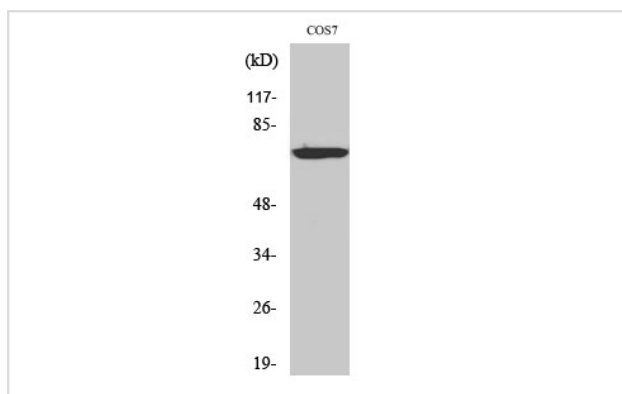
Western Blot: 1/500 - 1/2000.

Immunohistochemistry: 1/100 - 1/300.

ELISA: 1/40000.

Not yet tested in other applications.

Images



Western Blot analysis of COS7 cells using LIMK-1/2 Polyclonal Antibody

Note: This product is for in vitro research use only