

## MAD2 Polyclonal Antibody

Catalog No: #41117

Package Size: #41117-1 50ul #41117-2 100ul

Orders: order@signalwayantibody.com

Support: tech@signalwayantibody.com

## Description

Product Name	MAD2 Polyclonal Antibody
Host Species	Rabbit
Clonality	Polyclonal
Purification	The antibody was affinity-purified from rabbit antiserum by affinity-chromatography using epitope-specific immunogen.
Applications	WB ELISA
Species Reactivity	Hu
Specificity	MAD2 Polyclonal Antibody detects endogenous levels of MAD2 protein.
Immunogen Description	Synthesized peptide derived from the Internal region of human MAD2.
Target Name	MAD2
Other Names	MAD2L1; MAD2; Mitotic spindle assembly checkpoint protein MAD2A; HsMAD2; Mitotic arrest deficient 2-like protein 1; MAD2-like protein 1
Accession No.	Swiss-Prot: Q13257NCBI Gene ID: 4085
Uniprot	Q13257
GeneID	4085;
SDS-PAGE MW	25kd
Concentration	1mg/ml
Formulation	Liquid in PBS containing 50% glycerol, 0.5% BSA and 0.02% sodium azide.
Storage	Store at -20°C/1 year

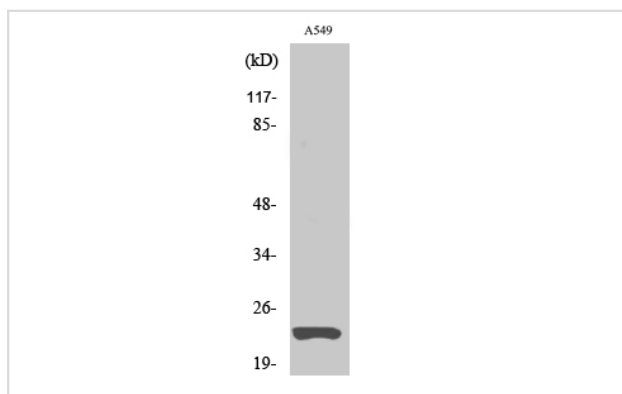
## Application Details

Western Blot: 1/500 - 1/2000.

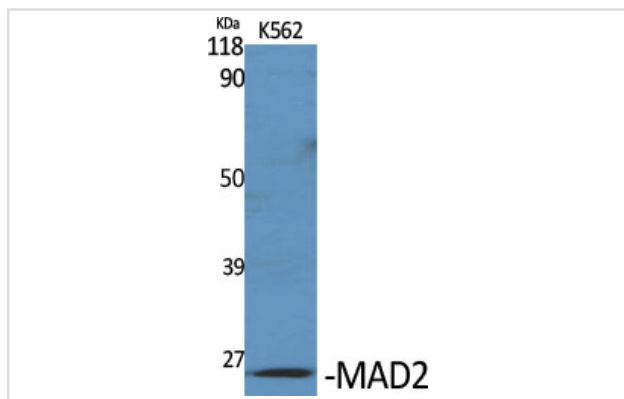
ELISA: 1/5000.

Not yet tested in other applications.

## Images



Western Blot analysis of A549 cells using MAD2 Polyclonal Antibody



Western Blot analysis of K562 cells using MAD2 Polyclonal Antibody

---

Note: This product is for in vitro research use only