

MADD Polyclonal Antibody

Catalog No: #41118

Package Size: #41118-1 50ul #41118-2 100ul

Orders: order@signalwayantibody.comSupport: tech@signalwayantibody.com

Description

Product Name	MADD Polyclonal Antibody
Host Species	Rabbit
Clonality	Polyclonal
Purification	The antibody was affinity-purified from rabbit antiserum by affinity-chromatography using epitope-specific immunogen.
Applications	WB IHC IF ELISA
Species Reactivity	Hu Ms Rt
Specificity	MADD Polyclonal Antibody detects endogenous levels of MADD protein.
Immunogen Type	peptide
Immunogen Description	Synthesized peptide derived from the Internal region of human MADD.
Target Name	MADD
Other Names	MADD; DENN; IG20; KIAA0358; MAP kinase-activating death domain protein; Differentially expressed in normal and neoplastic cells; Insulinoma glucagonoma clone 20; Rab3 GDP/GTP exchange factor
Accession No.	Swiss-Prot: Q8WXG6NCBI Gene ID: 8567
Uniprot	Q8WXG6
GeneID	8567;
SDS-PAGE MW	183kd
Concentration	1mg/ml
Formulation	Liquid in PBS containing 50% glycerol, 0.5% BSA and 0.02% sodium azide.
Storage	Store at -20°C/1 year

Application Details

Western Blot: 1/500 - 1/2000.

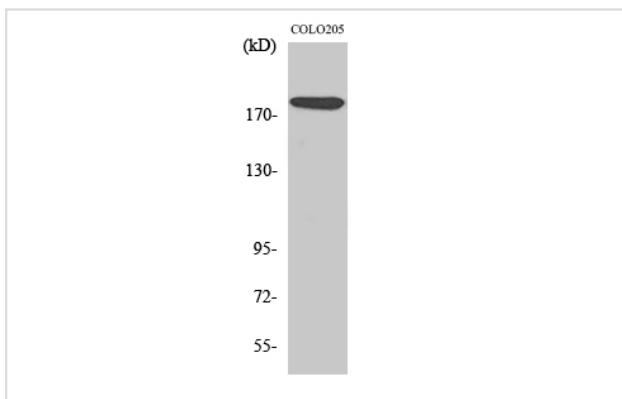
Immunohistochemistry: 1/100 - 1/300.

Immunofluorescence: 1/200 - 1/1000.

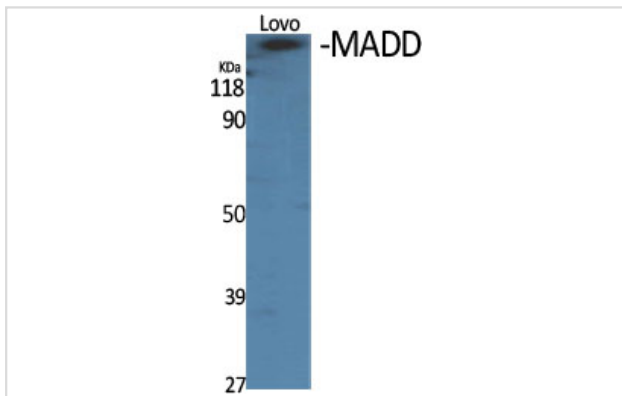
ELISA: 1/5000.

Not yet tested in other applications.

Images



Western Blot analysis of Jurkat cells using MADD Polyclonal Antibody



Western Blot analysis of LOVO cells using MADD Polyclonal Antibody

Note: This product is for in vitro research use only