

MAGE-C2 Polyclonal Antibody

Catalog No: #41119

Package Size: #41119-1 50ul #41119-2 100ul

Orders: order@signalwayantibody.com

Support: tech@signalwayantibody.com

Description

Product Name	MAGE-C2 Polyclonal Antibody
Host Species	Rabbit
Clonality	Polyclonal
Purification	The antibody was affinity-purified from rabbit antiserum by affinity-chromatography using epitope-specific immunogen.
Applications	WB ELISA
Species Reactivity	Hu
Specificity	MAGE-C2 Polyclonal Antibody detects endogenous levels of MAGE-C2 protein.
Immunogen Type	peptide
Immunogen Description	Synthesized peptide derived from the Internal region of human MAGE-C2.
Target Name	MAGE-C2
Other Names	MAGEC2; HCA587; MAGEE1; Melanoma-associated antigen C2; Cancer/testis antigen 10; CT10; Hepatocellular carcinoma-associated antigen 587; MAGE-C2 antigen; MAGE-E1 antigen
Accession No.	Swiss-Prot: Q9UBF1NCBI Gene ID: 51438
Uniprot	Q9UBF1
GeneID	51438;
SDS-PAGE MW	41kd
Concentration	1mg/ml
Formulation	Liquid in PBS containing 50% glycerol, 0.5% BSA and 0.02% sodium azide.
Storage	Store at -20°C/1 year

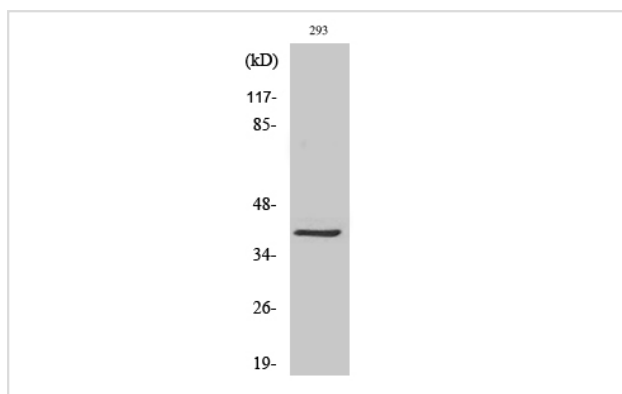
Application Details

Western Blot: 1/500 - 1/2000.

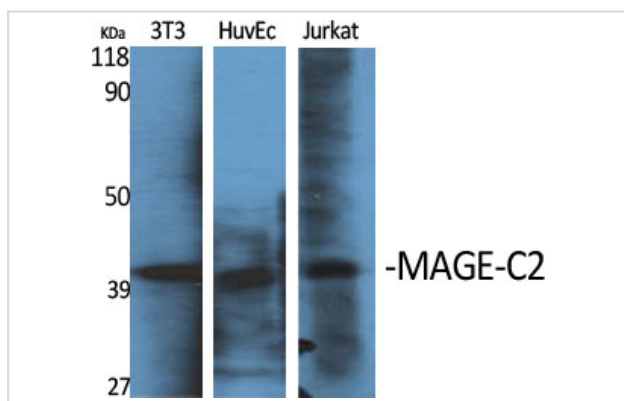
ELISA: 1/5000.

Not yet tested in other applications.

Images



Western Blot analysis of 293 cells using MAGE-C2 Polyclonal Antibody



Western Blot analysis of NIH-3T3 HuvEc Jurkat cells using MAGE-C2 Polyclonal Antibody

Note: This product is for in vitro research use only