

MAO-A Polyclonal Antibody

Catalog No: #41120

Package Size: #41120-1 50ul #41120-2 100ul

Orders: order@signalwayantibody.comSupport: tech@signalwayantibody.com

Description

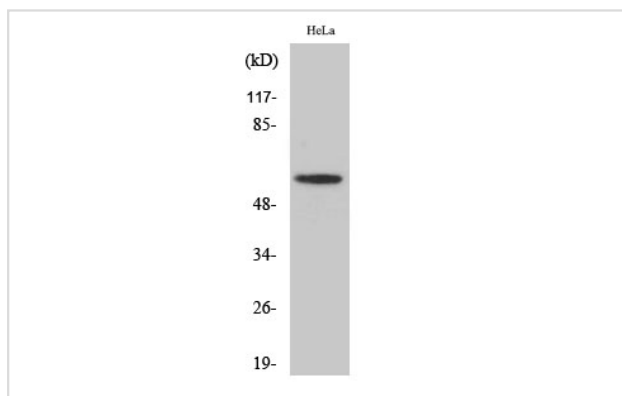
| | |
|-----------------------|---|
| Product Name | MAO-A Polyclonal Antibody |
| Host Species | Rabbit |
| Clonality | Polyclonal |
| Purification | The antibody was affinity-purified from rabbit antiserum by affinity-chromatography using epitope-specific immunogen. |
| Applications | WB IHC |
| Species Reactivity | Hu Ms Rt |
| Specificity | MAO-A Polyclonal Antibody detects endogenous levels of MAO-A protein. |
| Immunogen Type | peptide |
| Immunogen Description | Synthesized peptide derived from the Internal region of human MAO-A. |
| Target Name | MAO-A |
| Other Names | MAOA; Amine oxidase [flavin-containing] A; Monoamine oxidase type A; MAO-A |
| Accession No. | Swiss-Prot: P21397NCBI Gene ID: 4128 |
| Uniprot | P21397 |
| GeneID | 4128; |
| SDS-PAGE MW | 61kd |
| Concentration | 1mg/ml |
| Formulation | Liquid in PBS containing 50% glycerol, 0.5% BSA and 0.02% sodium azide. |
| Storage | Store at -20°C/1 year |

Application Details

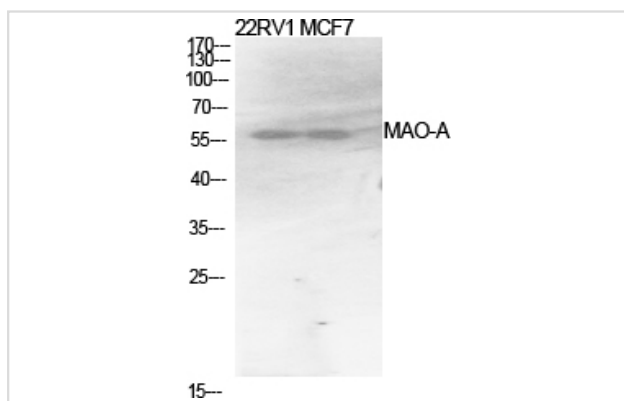
Western Blot: 1/500 - 1/2000.

Immunohistochemistry: 1/100 - 1/300.

Images



Western Blot analysis of HeLa cells using MAO-A Polyclonal Antibody



Western Blot analysis of 22RV1 MCF7 cells using MAO-A Polyclonal Antibody

Note: This product is for in vitro research use only