

## MARK1/2/3/4 Polyclonal Antibody

Catalog No: #41121

Package Size: #41121-1 50ul #41121-2 100ul

Orders: [order@signalwayantibody.com](mailto:order@signalwayantibody.com)Support: [tech@signalwayantibody.com](mailto:tech@signalwayantibody.com)

## Description

Product Name	MARK1/2/3/4 Polyclonal Antibody
Host Species	Rabbit
Clonality	Polyclonal
Purification	The antibody was affinity-purified from rabbit antiserum by affinity-chromatography using epitope-specific immunogen.
Applications	WB IHC IF ELISA
Species Reactivity	Hu Ms Rt
Specificity	MARK1/2/3/4 Polyclonal Antibody detects endogenous levels of MARK1/2/3/4 protein.
Immunogen Type	peptide
Immunogen Description	Synthesized peptide derived from the Internal region of human MARK1/2/3/4.
Target Name	MARK1/2/3/4
Other Names	MARK1; KIAA1477; MARK; Serine/threonine-protein kinase MARK1; MAP/microtubule affinity-regulating kinase 1; PAR1 homolog c; Par-1c; Par1c; MARK2; EMK1; Serine/threonine-protein kinase MARK2; ELKL motif kinase 1; EMK-1; MAP/microtubule affin
Accession No.	Swiss-Prot: Q9P0L2/Q7KZI7/P27448/Q96L34NCBI Gene ID: 4139/2011/4140/57787
Uniprot	Q9P0L2
GeneID	4139;
SDS-PAGE MW	89kd
Concentration	1mg/ml
Formulation	Liquid in PBS containing 50% glycerol, 0.5% BSA and 0.02% sodium azide.
Storage	Store at -20°C/1 year

## Application Details

Western Blot: 1/500 - 1/2000.

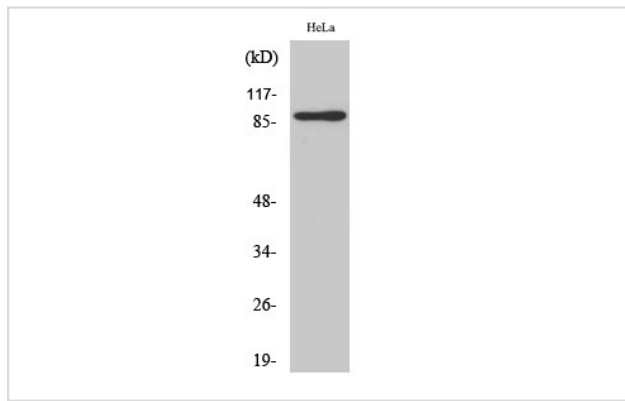
Immunohistochemistry: 1/100 - 1/300.

Immunofluorescence: 1/200 - 1/1000.

ELISA: 1/20000.

Not yet tested in other applications.

## Images



Western Blot analysis of HeLa cells using MARK1/2/3/4 Polyclonal Antibody

Note: This product is for in vitro research use only