

## MEK Kinase-3 Polyclonal Antibody

Catalog No: #41132

Package Size: #41132-1 50ul #41132-2 100ul

Orders: [order@signalwayantibody.com](mailto:order@signalwayantibody.com)Support: [tech@signalwayantibody.com](mailto:tech@signalwayantibody.com)

## Description

Product Name	MEK Kinase-3 Polyclonal Antibody
Host Species	Rabbit
Clonality	Polyclonal
Purification	The antibody was affinity-purified from rabbit antiserum by affinity-chromatography using epitope-specific immunogen.
Applications	WB IHC IF ELISA
Species Reactivity	Hu Ms
Specificity	MEK Kinase-3 Polyclonal Antibody detects endogenous levels of MEK Kinase-3 protein.
Immunogen Type	peptide
Immunogen Description	Synthesized peptide derived from the Internal region of human MEK Kinase-3.
Target Name	MEK Kinase-3
Other Names	MAP3K3; MAPKKK3; MEKK3; Mitogen-activated protein kinase kinase kinase 3; MAPK/ERK kinase kinase 3; MEK kinase 3; MEKK 3
Accession No.	Swiss-Prot: Q99759NCBI Gene ID: 4215
Uniprot	Q99759
GeneID	4215;
SDS-PAGE MW	71kd
Concentration	1mg/ml
Formulation	Liquid in PBS containing 50% glycerol, 0.5% BSA and 0.02% sodium azide.
Storage	Store at -20°C/1 year

## Application Details

Western Blot: 1/500 - 1/2000.

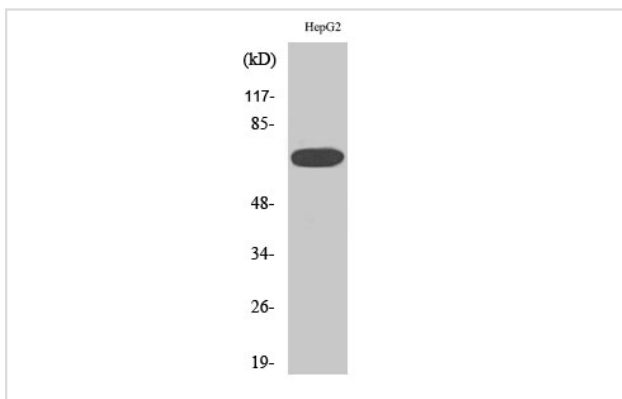
Immunohistochemistry: 1/100 - 1/300.

Immunofluorescence: 1/200 - 1/1000.

ELISA: 1/20000.

Not yet tested in other applications.

## Images



Western Blot analysis of HepG2 cells using MEK Kinase-3 Polyclonal Antibody

Note: This product is for in vitro research use only