

MEK-1/2 Polyclonal Antibody

Catalog No: #41136

Package Size: #41136-1 50ul #41136-2 100ul

Orders: order@signalwayantibody.comSupport: tech@signalwayantibody.com

Description

Product Name	MEK-1/2 Polyclonal Antibody
Host Species	Rabbit
Clonality	Polyclonal
Purification	The antibody was affinity-purified from rabbit antiserum by affinity-chromatography using epitope-specific immunogen.
Applications	WB IHC ELISA
Species Reactivity	Hu Ms Rt
Specificity	MEK-1/2 Polyclonal Antibody detects endogenous levels of MEK-1/2 protein.
Immunogen Type	peptide
Immunogen Description	Synthesized peptide derived from human MEK-1/2 around the non-phosphorylation site of S222/226.
Target Name	MEK-1/2
Other Names	MAP2K1; MEK1; PRKMK1; Dual specificity mitogen-activated protein kinase kinase 1; MAP kinase kinase 1; MAPKK 1; MKK1; ERK activator kinase 1; MAPK/ERK kinase 1; MEK 1; MAP2K2; MEK2; MKK2; PRKMK2; Dual specificity mitogen-activated protein k
Accession No.	Swiss-Prot: Q02750/P36507NCBI Gene ID: 5604/5605
Uniprot	Q02750
GeneID	5604;
SDS-PAGE MW	44kd
Concentration	1mg/ml
Formulation	Liquid in PBS containing 50% glycerol, 0.5% BSA and 0.02% sodium azide.
Storage	Store at -20°C/1 year

Application Details

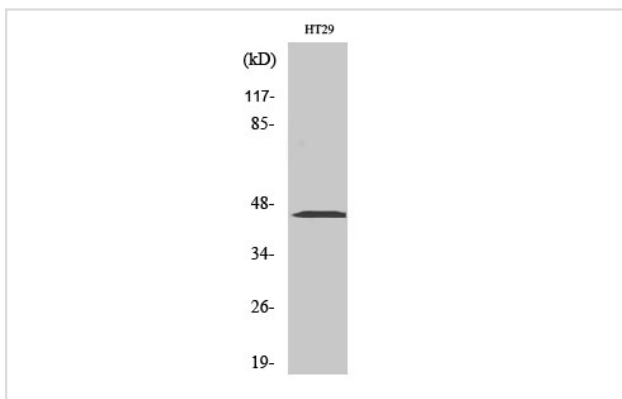
Western Blot: 1/500 - 1/2000.

Immunohistochemistry: 1/100 - 1/300.

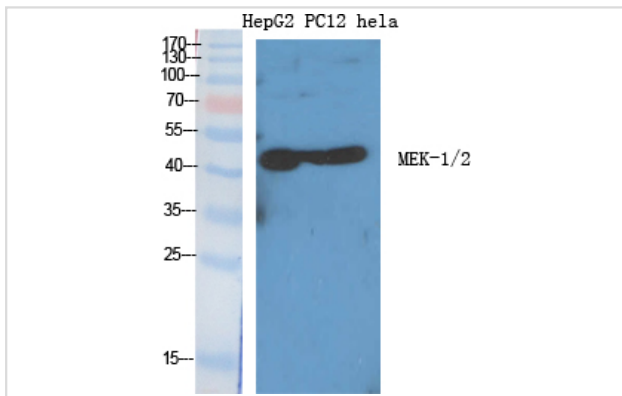
ELISA: 1/20000.

Not yet tested in other applications.

Images



Western Blot analysis of HT29 cells using MEK-1/2 Polyclonal Antibody



Western Blot analysis of HepG2 PC12 HELA cells using MEK-1/2 Polyclonal Antibody

Note: This product is for in vitro research use only