

CD272 antibody

Catalog No: #22636

Orders: order@signalwayantibody.com

Support: tech@signalwayantibody.com

Description

Product Name	CD272 antibody
Host Species	Rabbit
Clonality	Polyclonal
Purification	Purified by antigen-affinity chromatography.
Applications	WB IHC
Species Reactivity	Hu
Immunogen Type	Recombinant protein
Immunogen Description	Recombinant protein fragment contain a sequence corresponding to a region within amino acids 1 and 164 of CD272
Target Name	CD272
Accession No.	Swiss-Prot:Q7Z6A9Gene ID:151888
Uniprot	Q7Z6A9
GeneID	151888;
Concentration	1mg/ml
Formulation	Supplied in 0.1M Tris-buffered saline with 10% Glycerol (pH7.0). 0.01% Thimerosal was added as a preservative.
Storage	Store at -20°C for long term preservation (recommended). Store at 4°C for short term use.

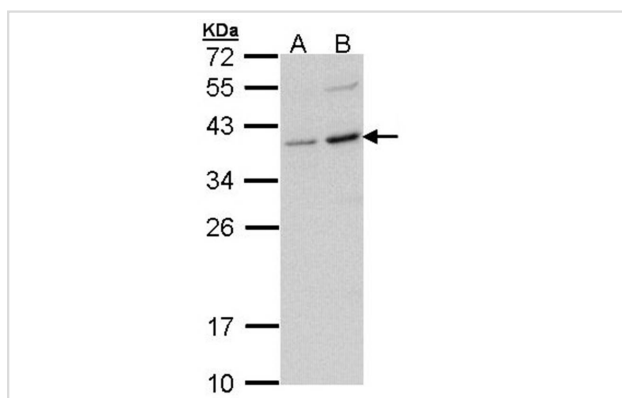
Application Details

Predicted MW: 27kd

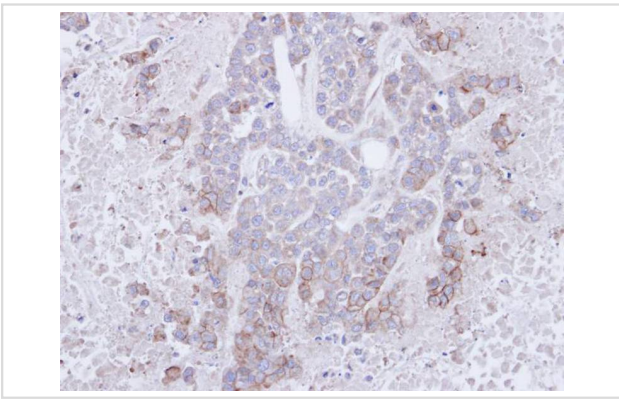
Western blotting: 1:500-1:3000

Immunohistochemistry: 1:100-1:500

Images



Sample (30 ug of whole cell lysate)
A: Molt-4
B: Raji
12% SDS PAGE
Primary antibody diluted at 1: 1000



Immunohistochemical analysis of paraffin-embedded MDAMB468 xenograft, using CD272 antibody at 1: 100 dilution.

Background

BTLA expression is induced during activation of T cells, and BTLA remains expressed on Th1 cells but not Th2 cells. Like PD1 (MIM 600244) and CTLA4 (MIM 123890), BTLA interacts with a B7 homolog, B7H4.[supplied by OMIM]

Note: This product is for in vitro research use only