

mGluR-4 Polyclonal Antibody

Catalog No: #41142

Package Size: #41142-1 50ul #41142-2 100ul

Orders: order@signalwayantibody.comSupport: tech@signalwayantibody.com

Description

Product Name	mGluR-4 Polyclonal Antibody
Host Species	Rabbit
Clonality	Polyclonal
Purification	The antibody was affinity-purified from rabbit antiserum by affinity-chromatography using epitope-specific immunogen.
Applications	WB IHC ELISA
Species Reactivity	Hu Ms Rt
Specificity	mGluR-4 Polyclonal Antibody detects endogenous levels of mGluR-4 protein.
Immunogen Type	peptide
Immunogen Description	Synthesized peptide derived from the C-terminal region of human mGluR-4.
Target Name	mGluR-4
Other Names	GRM4; GPRC1D; MGLUR4; Metabotropic glutamate receptor 4; mGluR4
Accession No.	Swiss-Prot: Q14833NCBI Gene ID: 2914
Uniprot	Q14833
GeneID	2914;
SDS-PAGE MW	100kd
Concentration	1mg/ml
Formulation	Liquid in PBS containing 50% glycerol, 0.5% BSA and 0.02% sodium azide.
Storage	Store at -20°C/1 year

Application Details

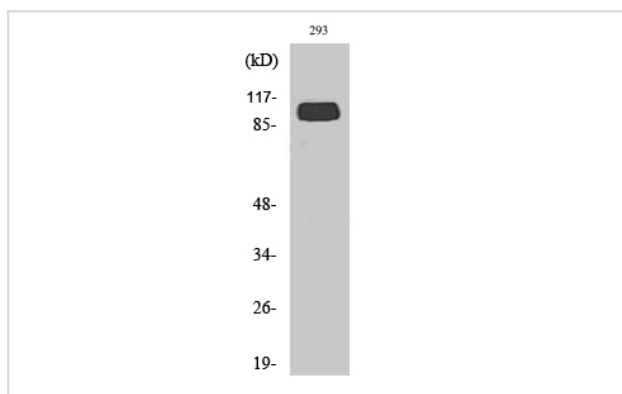
Western Blot: 1/500 - 1/2000.

Immunohistochemistry: 1/100 - 1/300.

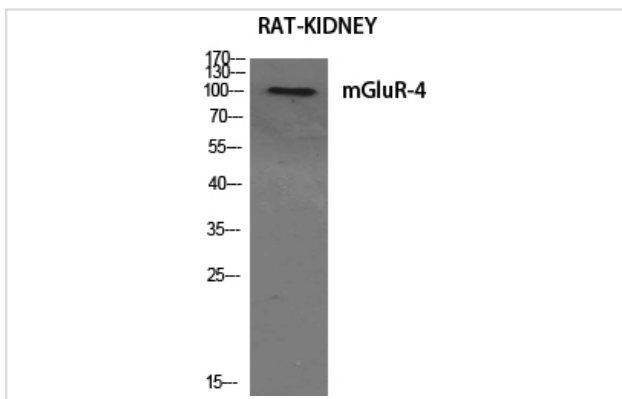
ELISA: 1/10000.

Not yet tested in other applications.

Images



Western Blot analysis of 293 cells using mGluR-4 Polyclonal Antibody



Western Blot analysis of RAT-KIDNEY cells using mGluR-4 Polyclonal Antibody

Note: This product is for in vitro research use only