

## MINK1 Polyclonal Antibody

Catalog No: #41144

Package Size: #41144-1 50ul #41144-2 100ul

Orders: order@signalwayantibody.com

Support: tech@signalwayantibody.com

## Description

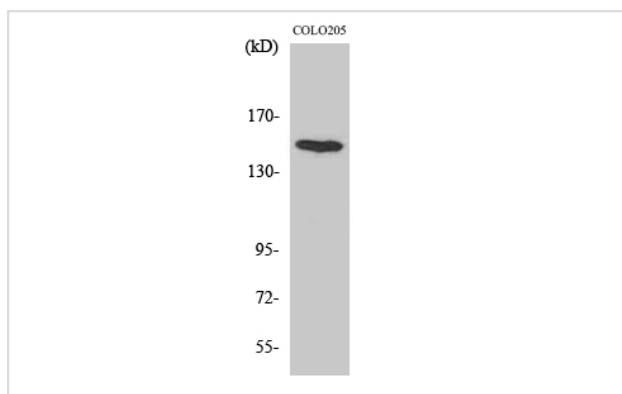
Product Name	MINK1 Polyclonal Antibody
Host Species	Rabbit
Clonality	Polyclonal
Purification	The antibody was affinity-purified from rabbit antiserum by affinity-chromatography using epitope-specific immunogen.
Applications	WB IHC
Species Reactivity	Hu Ms
Specificity	MINK1 Polyclonal Antibody detects endogenous levels of MINK1 protein.
Immunogen Type	peptide
Immunogen Description	Synthesized peptide derived from the Internal region of human MINK1.
Target Name	MINK1
Other Names	MINK1; B55; MAP4K6; MINK; YSK2; ZC3; Misshapen-like kinase 1; GCK family kinase MiNK; MAPK/ERK kinase kinase kinase 6; MEK kinase kinase 6; MEKKK 6; Misshapen/NIK-related kinase; Mitogen-activated protein kinase kinase kinase kinase 6
Accession No.	Swiss-Prot: Q8N4C8NCBI Gene ID: 50488
Uniprot	Q8N4C8
GeneID	50488;
SDS-PAGE MW	150kd
Concentration	1mg/ml
Formulation	Liquid in PBS containing 50% glycerol, 0.5% BSA and 0.02% sodium azide.
Storage	Store at -20°C/1 year

## Application Details

Western Blot: 1/500 - 1/2000.

Immunohistochemistry: 1/100 - 1/300.

## Images



Western Blot analysis of COLO205 cells using MINK1 Polyclonal Antibody

---

Note: This product is for in vitro research use only