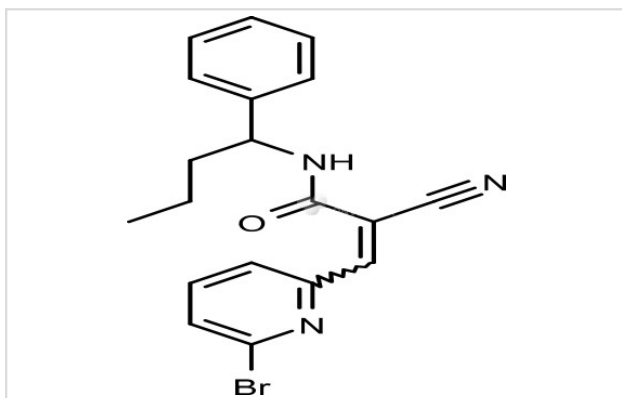


Description

| | |
|-------------------|-------------------------------------------------|
| Product Name | WP1130 |
| Brief Description | Inhibitors |
| Purification | 98.00% |
| Target Name | Bcr-Abl inhibitor |
| Calculated MW | 384.27 |
| Formulation | C19H18BrN3O |
| Storage | 3 years -20°C powder; 2 years -80°C in solvent; |

Images



Product Description

Research Area: Cancer SMILES: CCC[C@@H](C1=CC=CC=C1)NC(=O)/C(=C/C2=NC(=CC=C2)Br)/C#N Pathways: Angiogenesis; Cytoskeletal Signaling Receptor: Bcr-Abl
 Boling pt: Melting pt: Solubility: DMSO: 77 mg/mL (200.37 mM) Ethanol: 18 mg/mL (46.84 mM) Water:

References

1. Bartholomeusz GA, et al. Blood, 2007, 109(8), 3470-3478.

Note: This product is for in vitro research use only