

## Calpeptin

Catalog No: #S6432

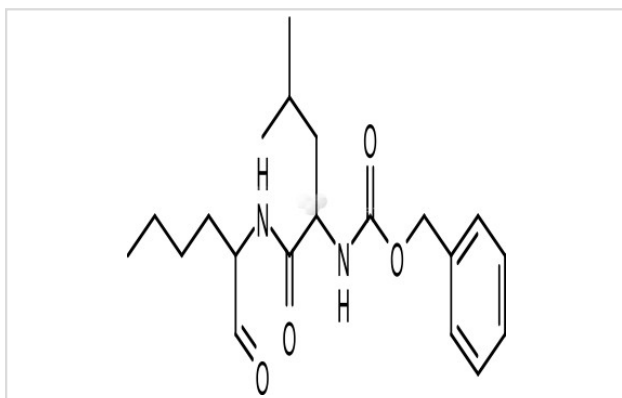
Orders: order@signalwayantibody.com

Support: tech@signalwayantibody.com

## Description

Product Name	Calpeptin
Brief Description	Inhibitors
Purification	98.00%
Target Name	Cysteine Protease inhibitor
Calculated MW	362.46
Formulation	C <sub>20</sub> H <sub>30</sub> N <sub>2</sub> O <sub>4</sub>
Storage	3 years -20°C powder; 2 years -80°C in solvent;

## Images



## Product Description

Research Area: Cardiovascular

systemSMILES:CCCC[C@@H](C=O)NC(=O)[C@H](CC(C)C)NC(=O)OCC1=CC=CC=C1Pathways:Proteases/ProteasomeReceptor:Calpain 1(human platelets); Calpain 1(porcine erythrocytes); Calpain 2(porcine kidney); PapainBoiling pt:Melting pt:Solubility:DMSO:72 mg/mL (198.64 mM)Ethanol:72 mg/mL (198.64 mM)Water:

## References

1. Tsujinaka T, et al. Biochem Biophys Res Commun. 1988, 153(3), 1201-1208.

Note: This product is for in vitro research use only