

MRP-L40 Polyclonal Antibody

Catalog No: #41176

Package Size: #41176-1 50ul #41176-2 100ul

Orders: order@signalwayantibody.comSupport: tech@signalwayantibody.com

Description

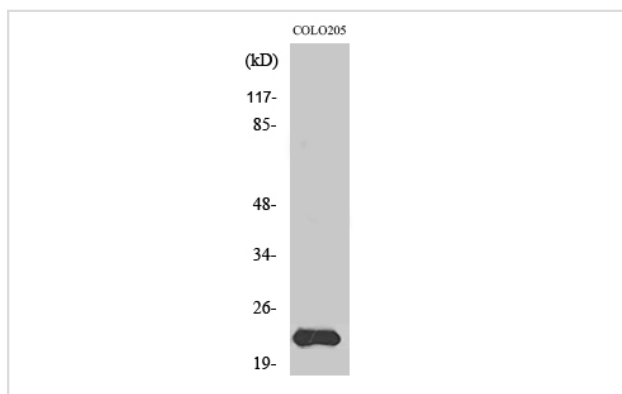
Product Name	MRP-L40 Polyclonal Antibody
Host Species	Rabbit
Clonality	Polyclonal
Purification	The antibody was affinity-purified from rabbit antiserum by affinity-chromatography using epitope-specific immunogen.
Applications	WB IHC
Species Reactivity	Hu
Specificity	MRP-L40 Polyclonal Antibody detects endogenous levels of MRP-L40 protein.
Immunogen Type	peptide
Immunogen Description	Synthesized peptide derived from the Internal region of human MRP-L40.
Target Name	MRP-L40
Other Names	MRPL40; NLVCF; URIM; 39S ribosomal protein L40; mitochondrial; L40mt; MRP-L40; Nuclear localization signal-containing protein deleted in velocardiofacial syndrome; Up-regulated in metastasis
Accession No.	Swiss-Prot: Q9NQ50NCBI Gene ID: 64976
Uniprot	Q9NQ50
GeneID	64976;
SDS-PAGE MW	24kd
Concentration	1mg/ml
Formulation	Liquid in PBS containing 50% glycerol, 0.5% BSA and 0.02% sodium azide.
Storage	Store at -20°C/1 year

Application Details

Western Blot: 1/500 - 1/2000.

Immunohistochemistry: 1/100 - 1/300.

Images



Western Blot analysis of COLO205 cells using MRP-L40 Polyclonal Antibody

Note: This product is for in vitro research use only