

MRP-S12 Polyclonal Antibody

Catalog No: #41178

Package Size: #41178-1 50ul #41178-2 100ul

Orders: order@signalwayantibody.comSupport: tech@signalwayantibody.com

Description

Product Name	MRP-S12 Polyclonal Antibody
Host Species	Rabbit
Clonality	Polyclonal
Purification	The antibody was affinity-purified from rabbit antiserum by affinity-chromatography using epitope-specific immunogen.
Applications	WB ELISA
Species Reactivity	Hu Ms
Specificity	MRP-S12 Polyclonal Antibody detects endogenous levels of MRP-S12 protein.
Immunogen Type	peptide
Immunogen Description	Synthesized peptide derived from the Internal region of human MRP-S12.
Target Name	MRP-S12
Other Names	MRPS12; RPMS12; RPSM12; 28S ribosomal protein S12; mitochondrial; MRP-S12; S12mt; MT-RPS12
Accession No.	Swiss-Prot: O15235NCBI Gene ID: 6183
Uniprot	O15235
GeneID	6183;
SDS-PAGE MW	20kd
Concentration	1mg/ml
Formulation	Liquid in PBS containing 50% glycerol, 0.5% BSA and 0.02% sodium azide.
Storage	Store at -20°C/1 year

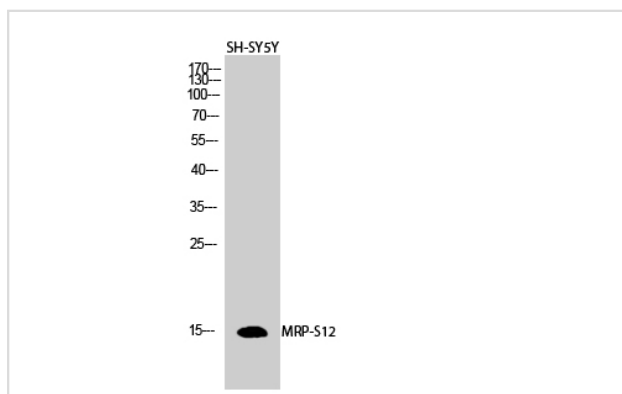
Application Details

Western Blot: 1/500 - 1/2000.

ELISA: 1/10000.

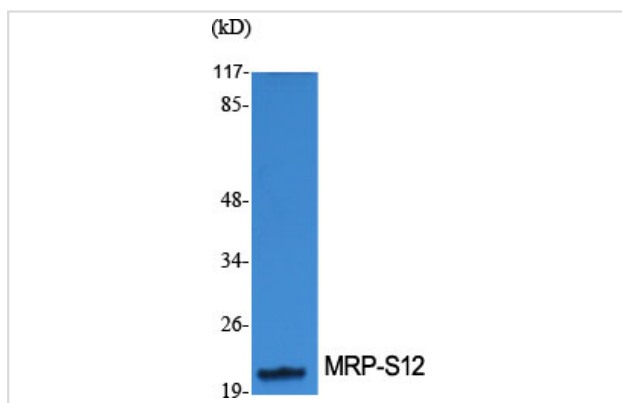
Not yet tested in other applications.

Images



Western Blot analysis of SH-SY5Y cells using MRP-S12 Polyclonal Antibody

Western Blot analysis of various cells using MRP-S12 Polyclonal Antibody



Note: This product is for in vitro research use only