

MRP-S21 Polyclonal Antibody

Catalog No: #41179

Package Size: #41179-1 50ul #41179-2 100ul

Orders: order@signalwayantibody.com

Support: tech@signalwayantibody.com

Description

Product Name	MRP-S21 Polyclonal Antibody
Host Species	Rabbit
Clonality	Polyclonal
Purification	The antibody was affinity-purified from rabbit antiserum by affinity-chromatography using epitope-specific immunogen.
Applications	WB IHC IF
Species Reactivity	Hu Ms Rt Mk
Specificity	MRP-S21 Polyclonal Antibody detects endogenous levels of MRP-S21 protein.
Immunogen Type	peptide
Immunogen Description	Synthesized peptide derived from the Internal region of human MRP-S21.
Target Name	MRP-S21
Other Names	MRPS21; RPMS21; MDS016; 28S ribosomal protein S21; mitochondrial; MRP-S21; S21mt
Accession No.	Swiss-Prot: P82921NCBI Gene ID: 54460
Uniprot	P82921
GeneID	54460;
SDS-PAGE MW	11kd
Concentration	1mg/ml
Formulation	Liquid in PBS containing 50% glycerol, 0.5% BSA and 0.02% sodium azide.
Storage	Store at -20°C/1 year

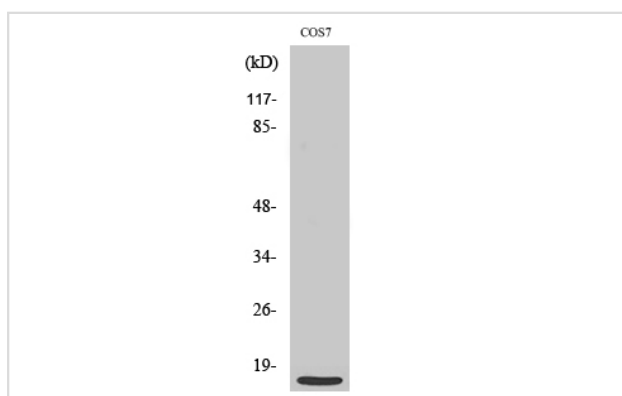
Application Details

Western Blot: 1/500 - 1/2000.

Immunohistochemistry: 1/100 - 1/300.

Immunofluorescence: 1/200 - 1/1000.

Images



Western Blot analysis of COS7 cells using MRP-S21 Polyclonal Antibody

Note: This product is for in vitro research use only